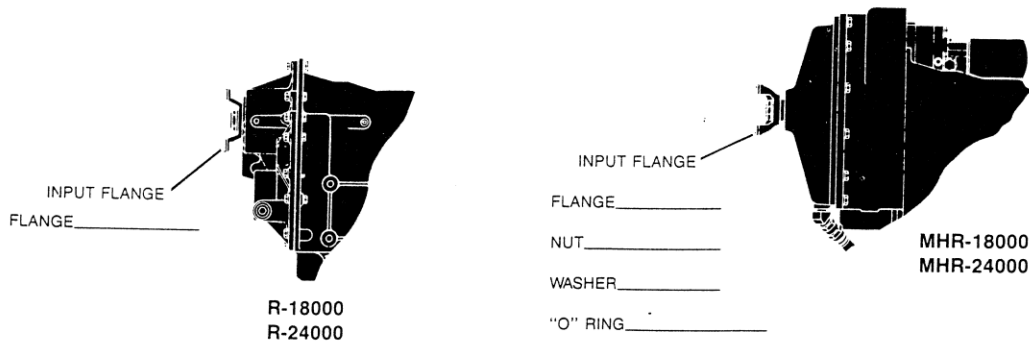
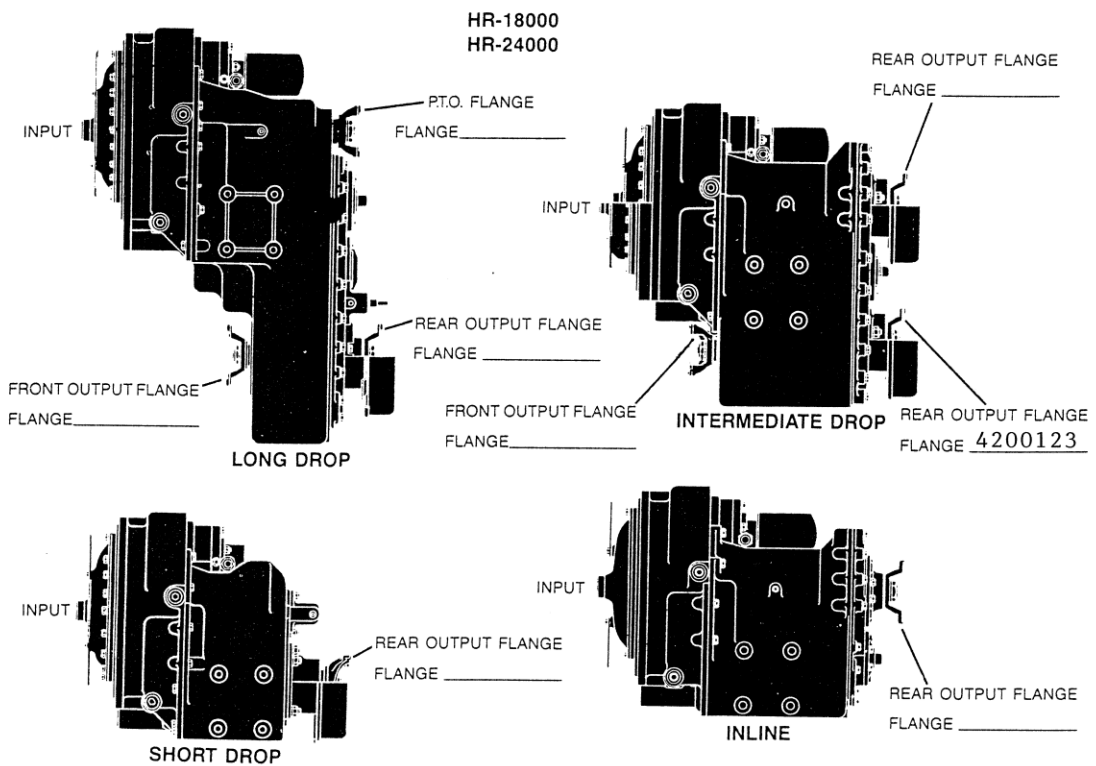
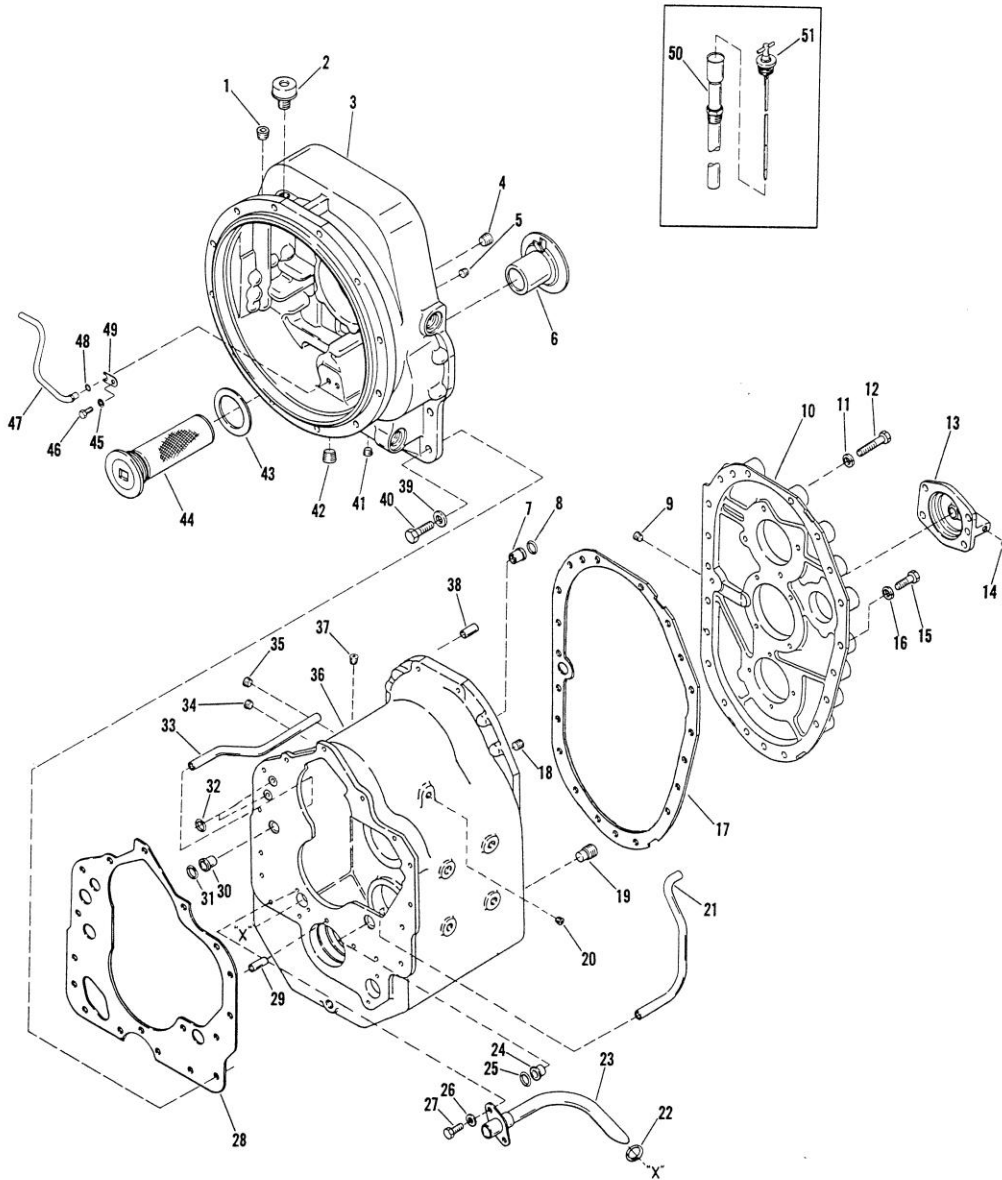




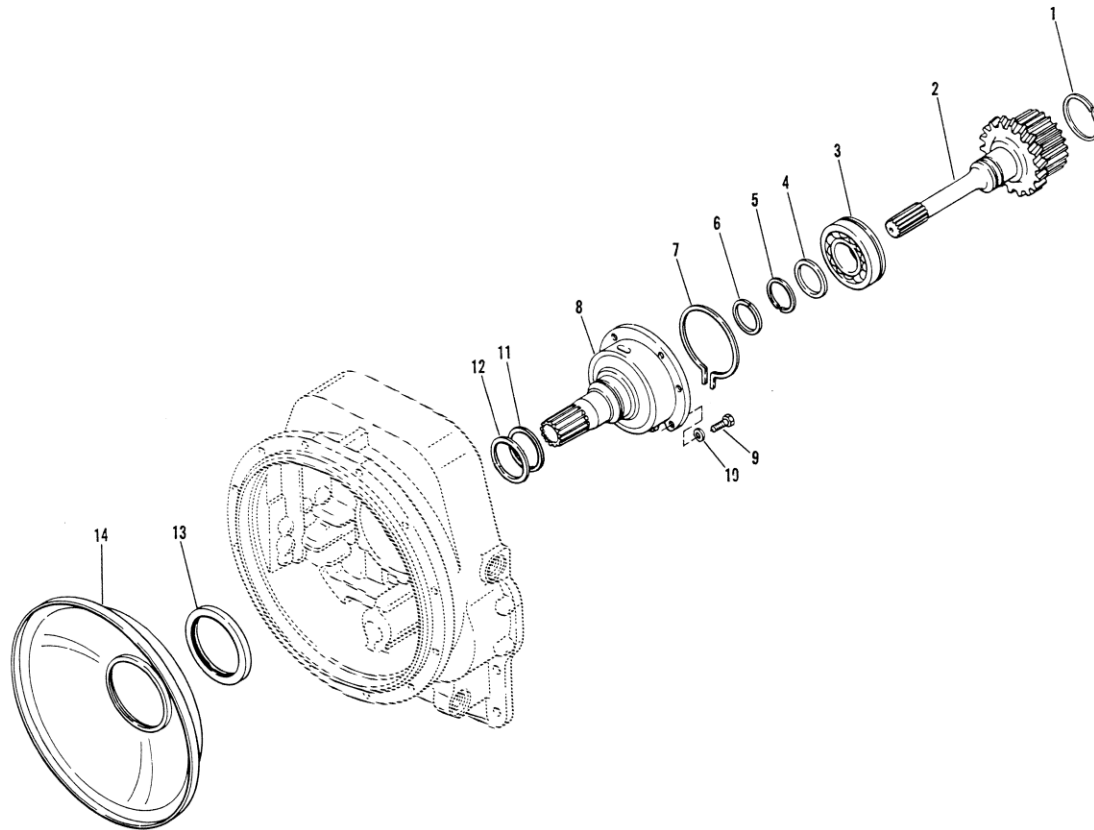
MODEL NO. 12.9HR18315-4  
 PART NO. 4260993  
 DATE 31-5-00





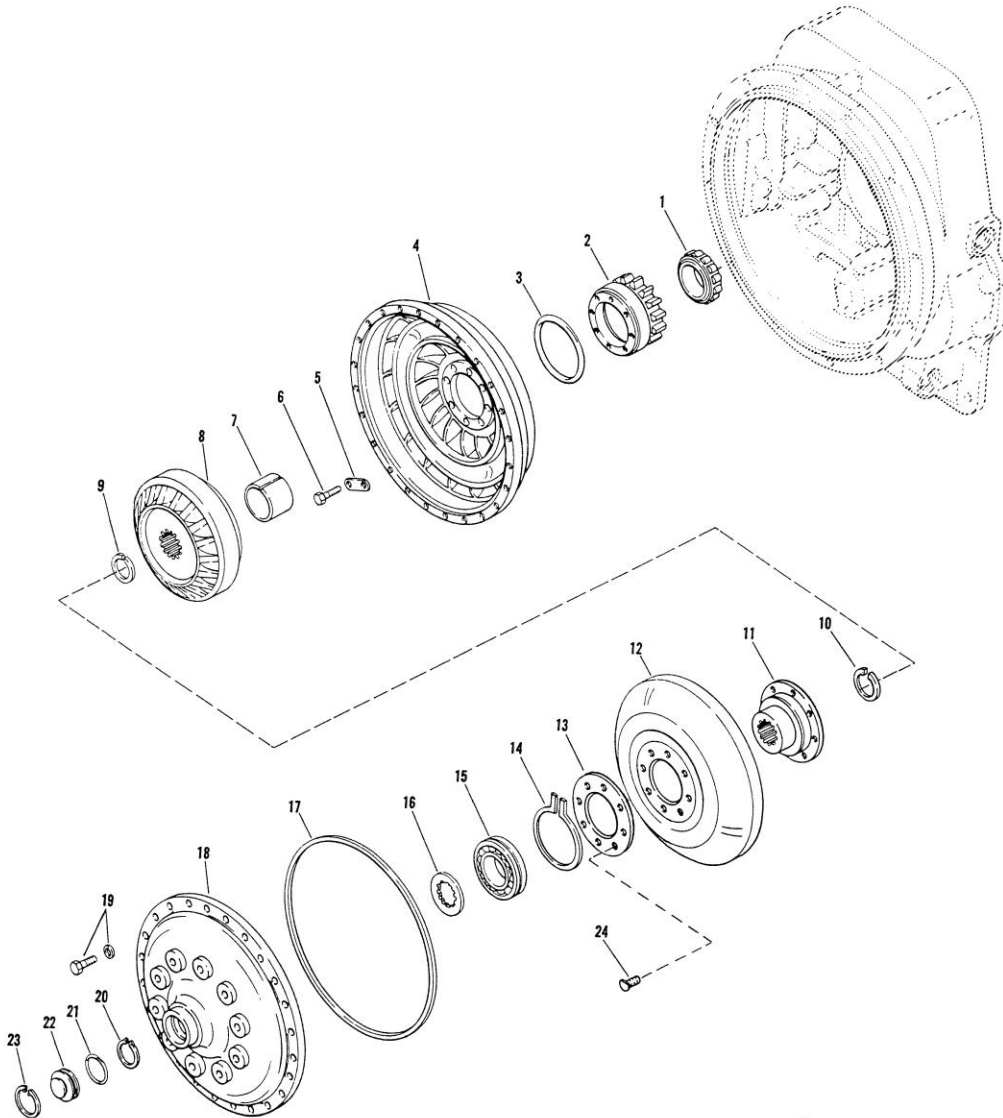


18000 TURBINE SHAFT, STATOR SUPPORT  
& OIL BAFFLE GROUP



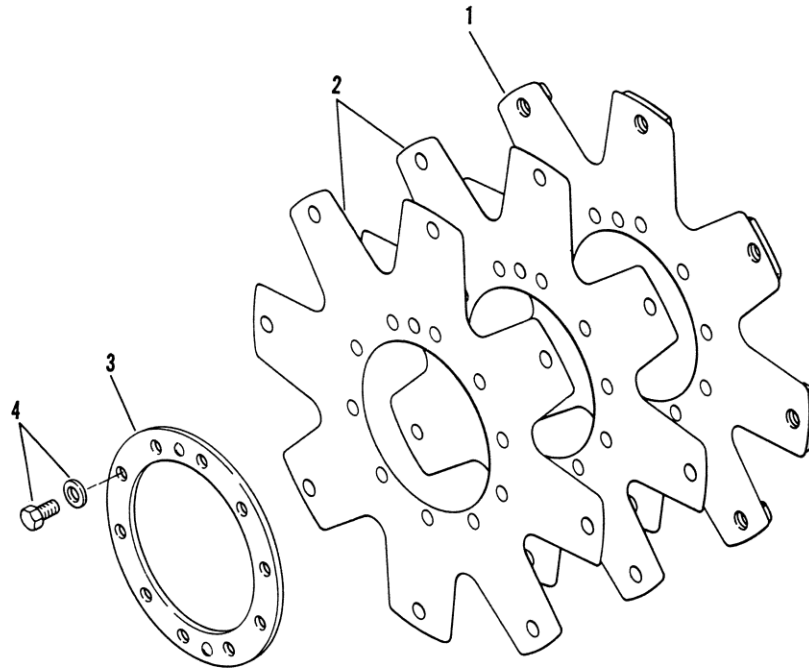


18000  
TORQUE CONVERTER ASSEMBLY  
STEEL TURBINE HUB



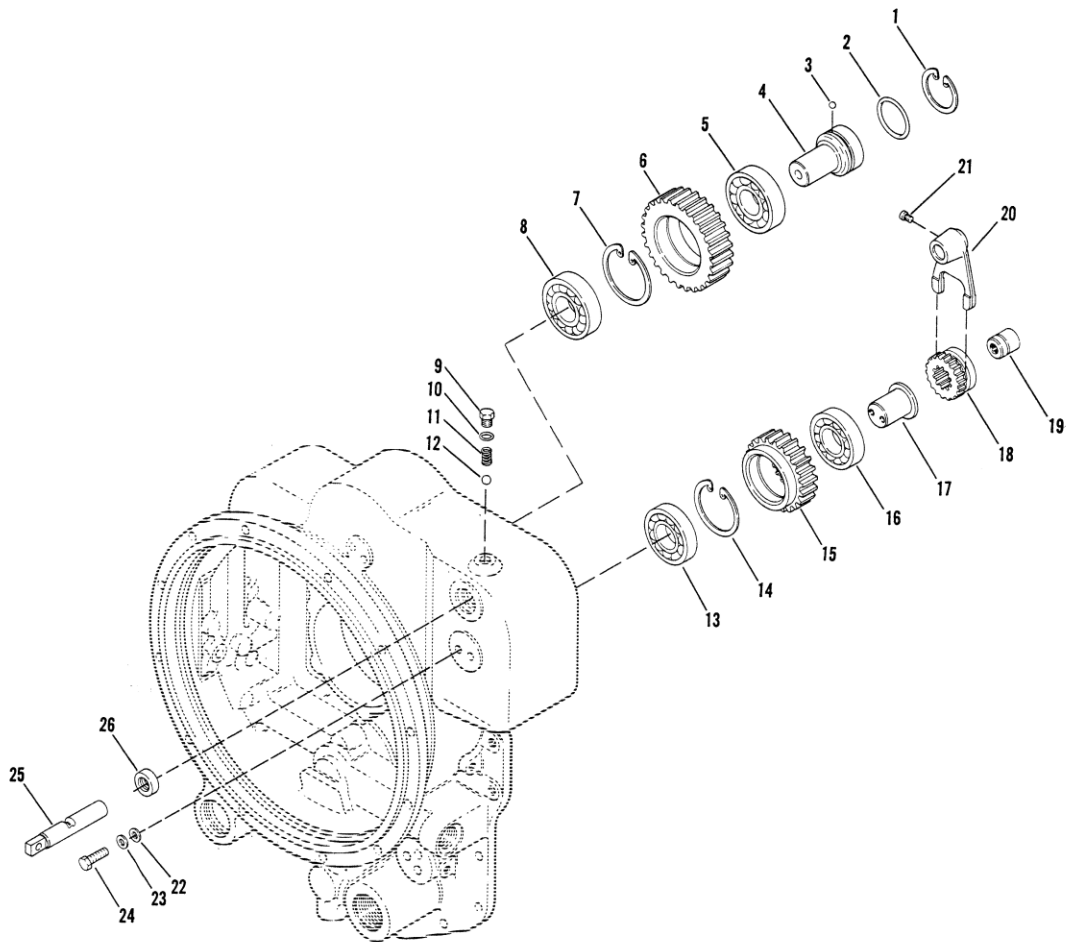


18000 DRIVE PLATE GROUP



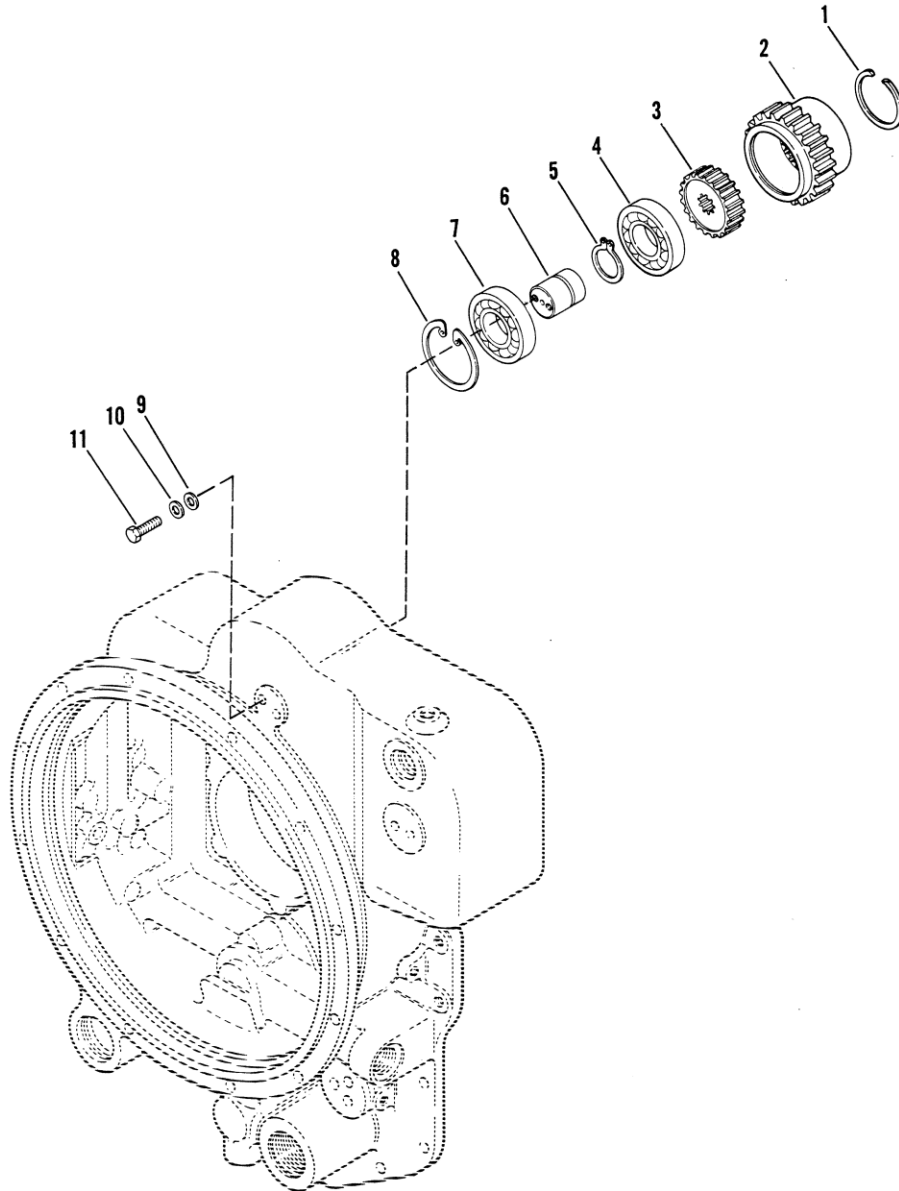


18000 AUXILIARY PUMP DRIVE DISCONNECT GROUP



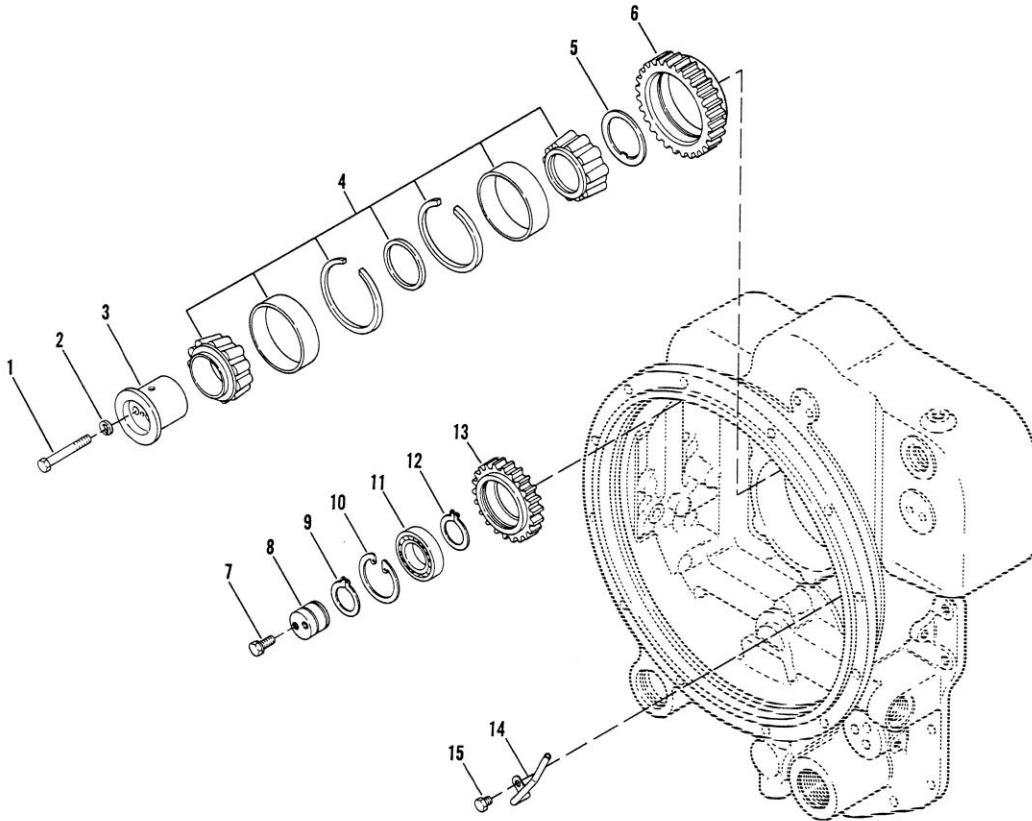


18000 AUXILIARY PUMP DRIVE GROUP





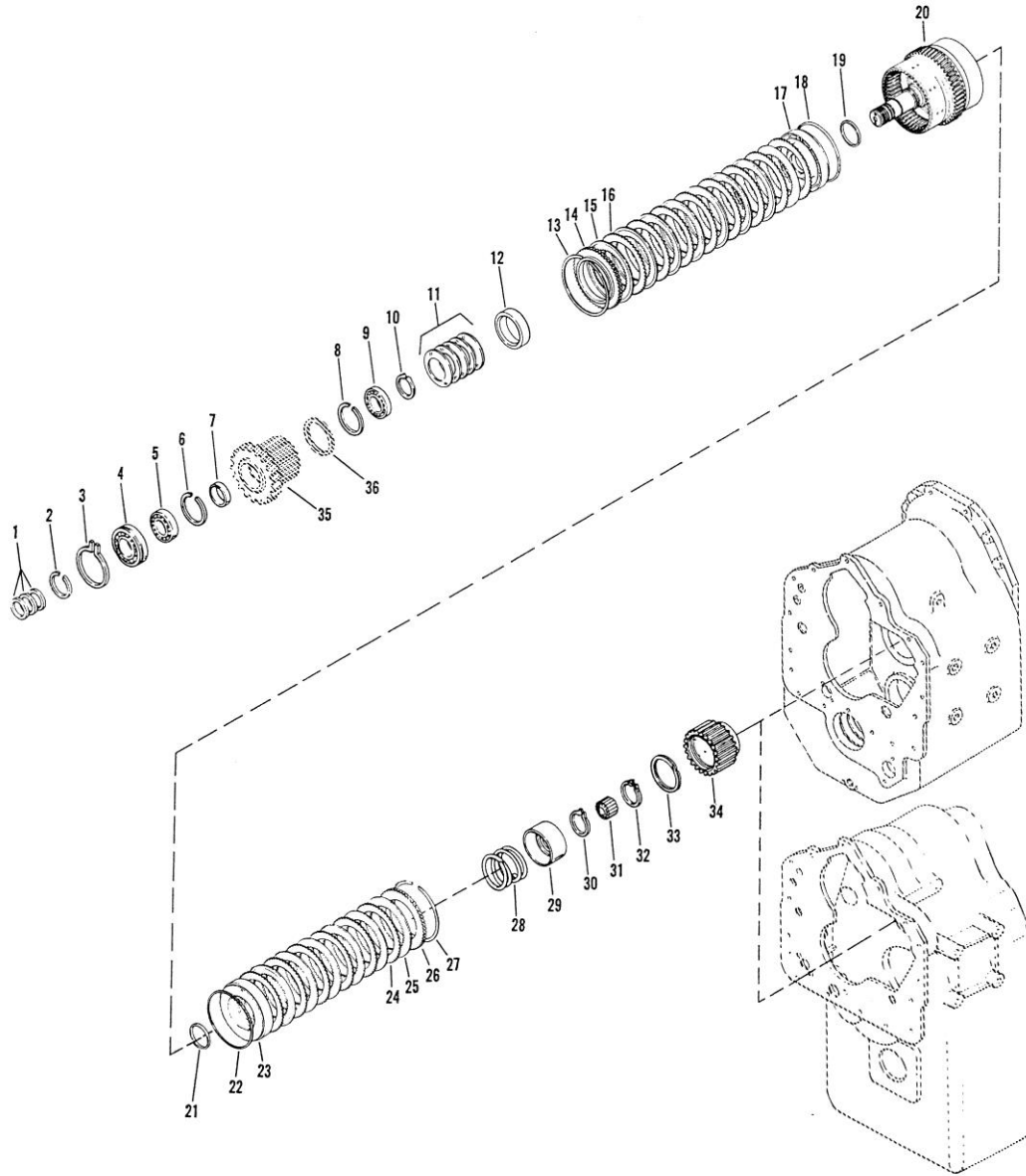
18000 CHARGING PUMP GROUP  
AUXILIARY PUMP DRIVE





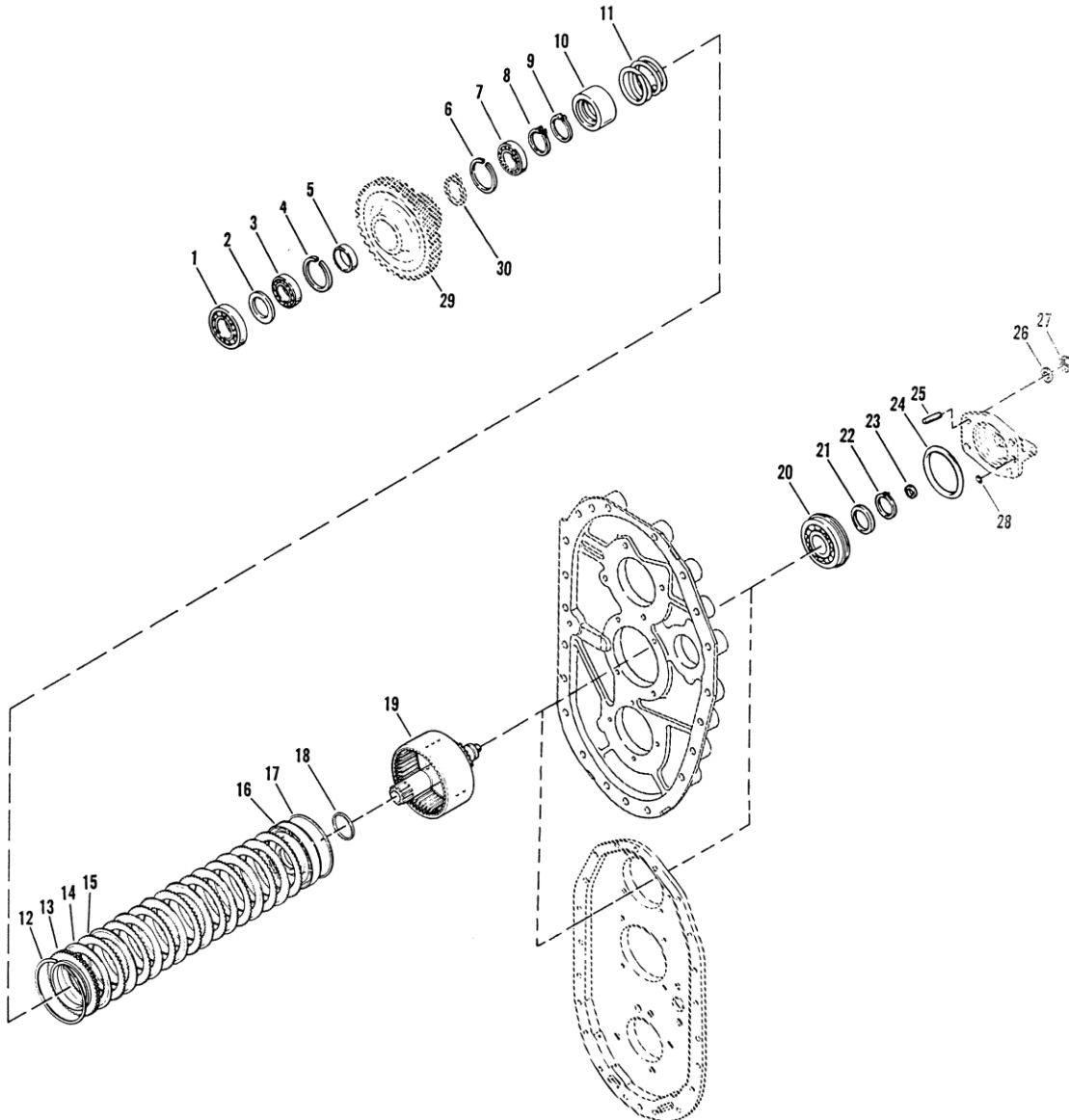


18000  
REVERSE & 2nd SHAFT GROUP  
3 SPEED



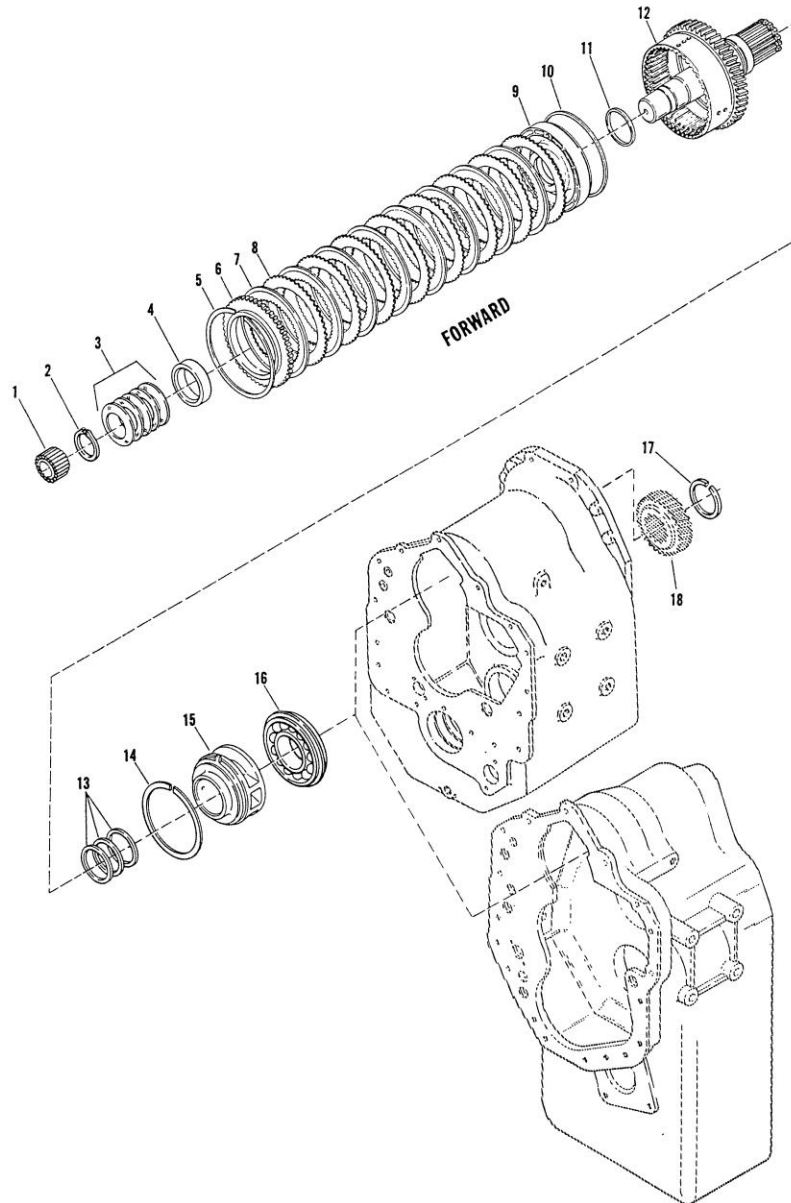


18000  
LOW SPEED SHAFT GROUP  
3 SPEED





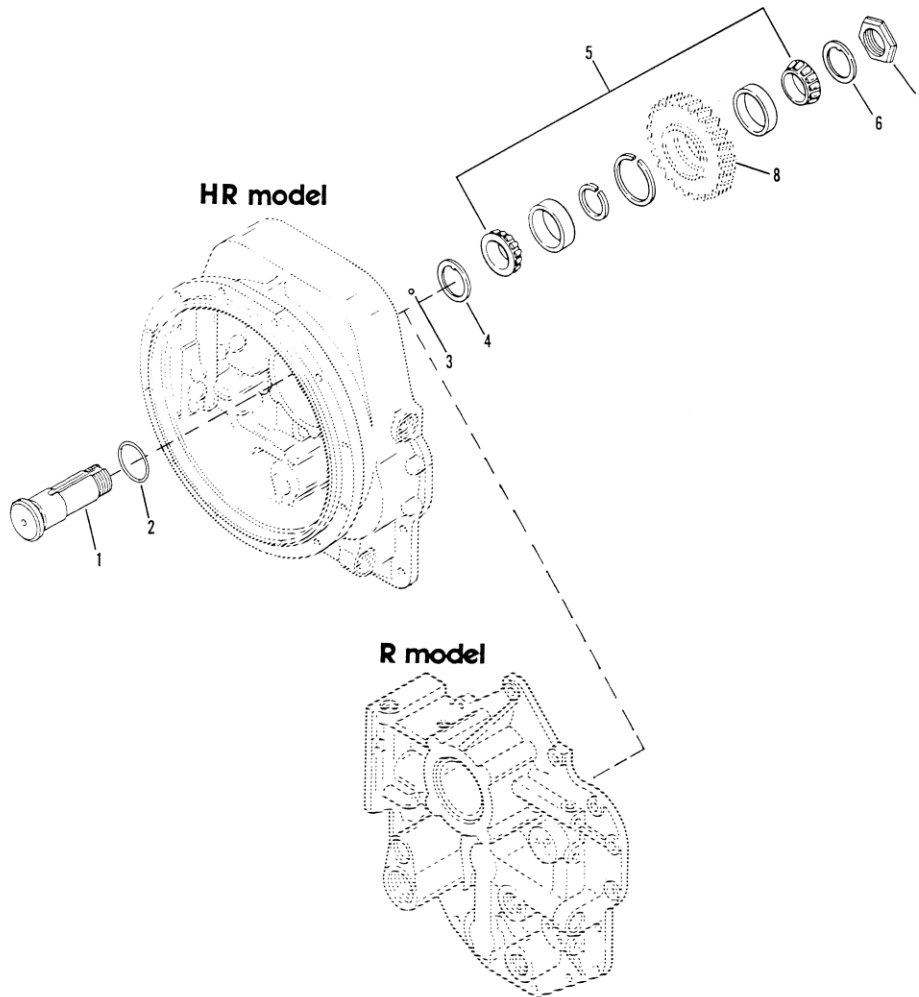
18000 FORWARD SHAFT GROUP





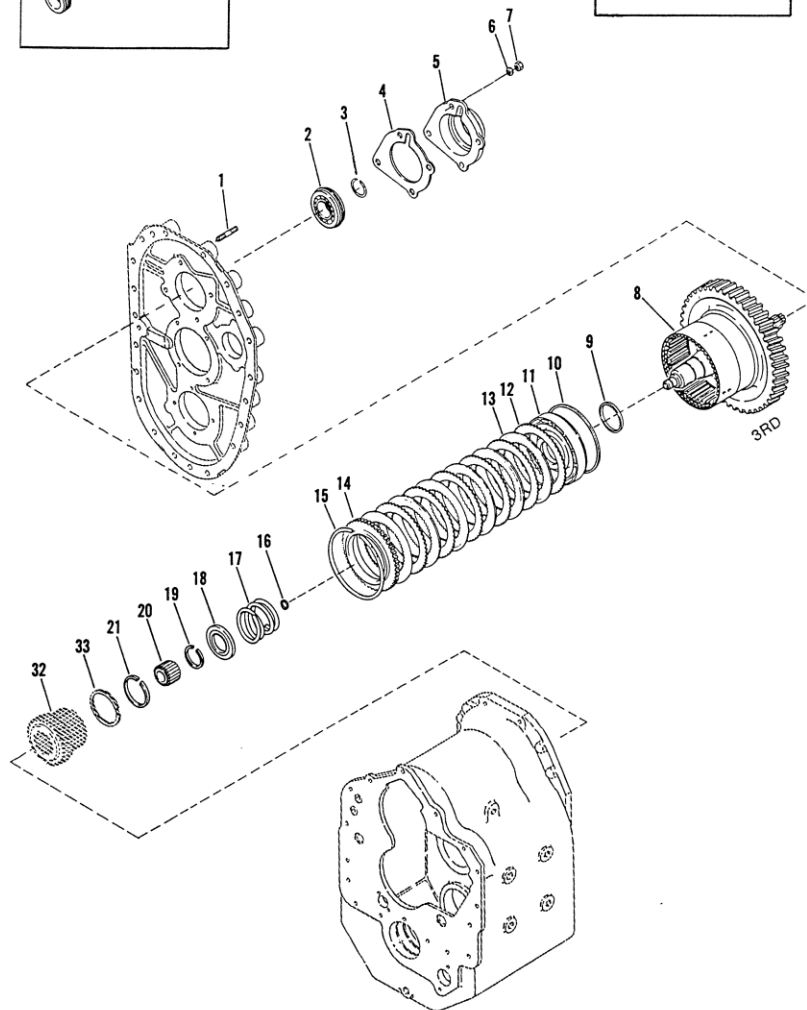
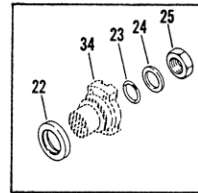
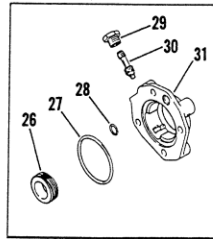
18000

REVERSE IDLER GROUP



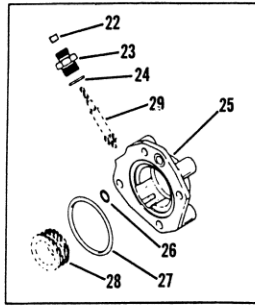


18000  
3RD SHAFT CLUTCH GROUP  
INTERMEDIATE DROP

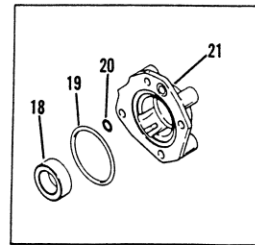
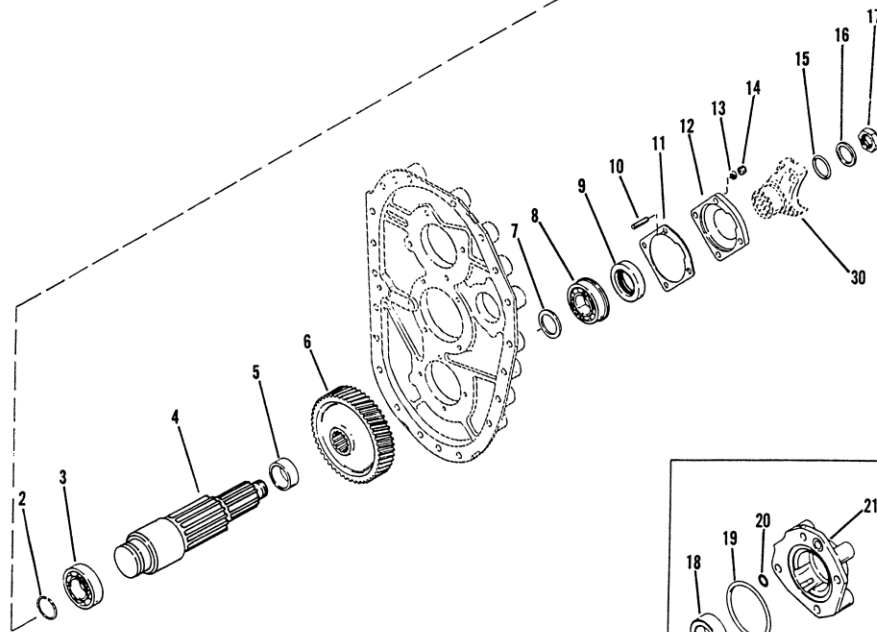
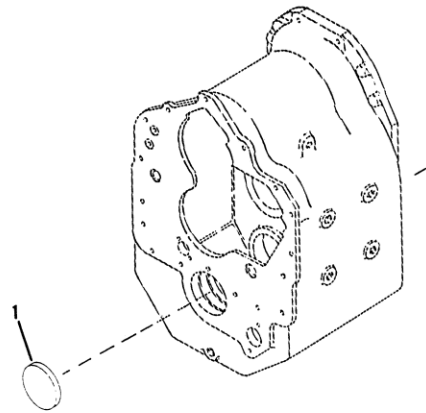




18000  
OUTPUT SHAFT GROUP  
INTERMEDIATE DROP



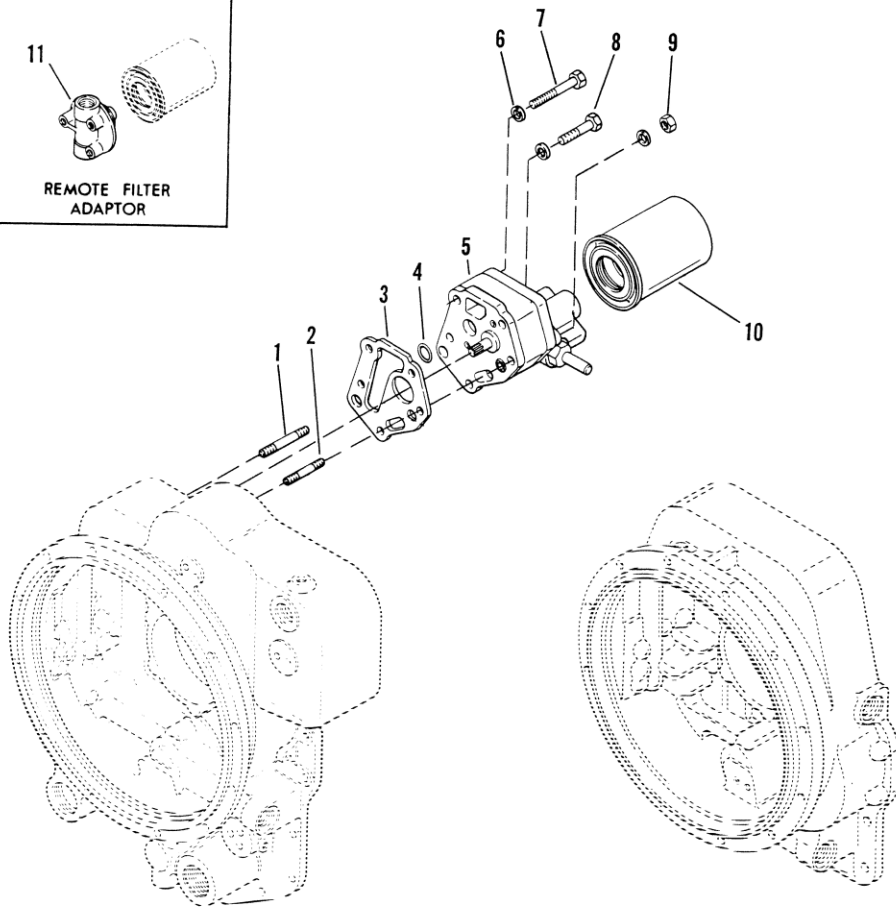
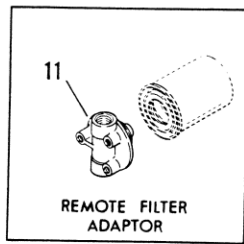
PARKING BRAKE  
WITH SPEEDO GEAR



PARKING BRAKE  
LESS SPEEDO GEAR

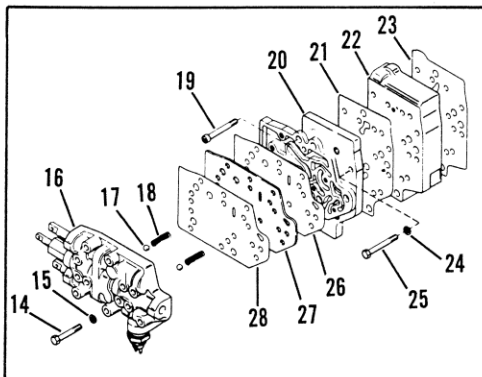
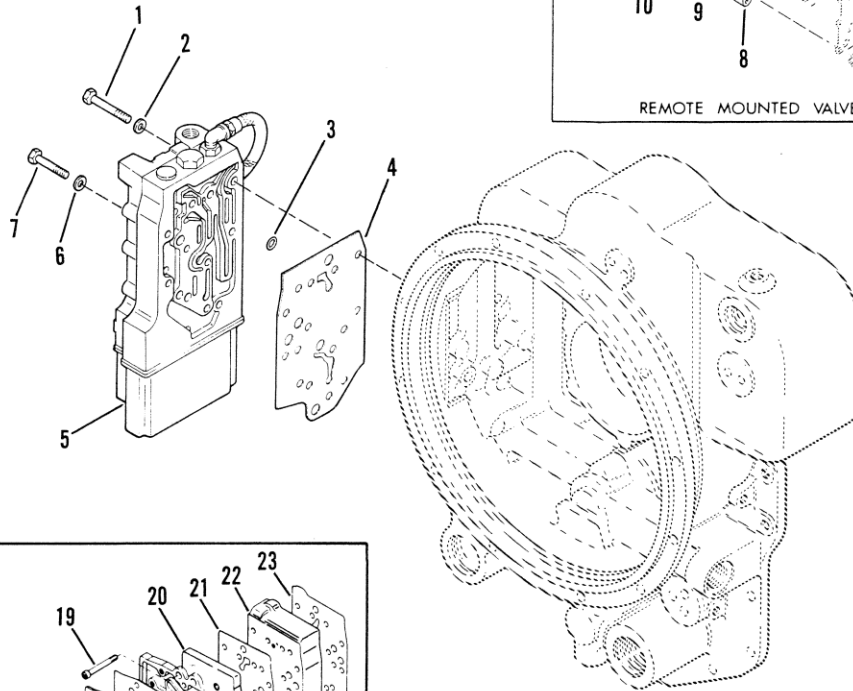
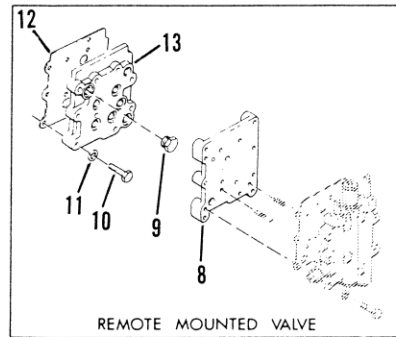


18000 CHARGING PUMP & FILTER ASSEMBLY GROUP





18000 - 6 SPEED ELECTRIC CONTROL VALVE MOUNTING GROUP



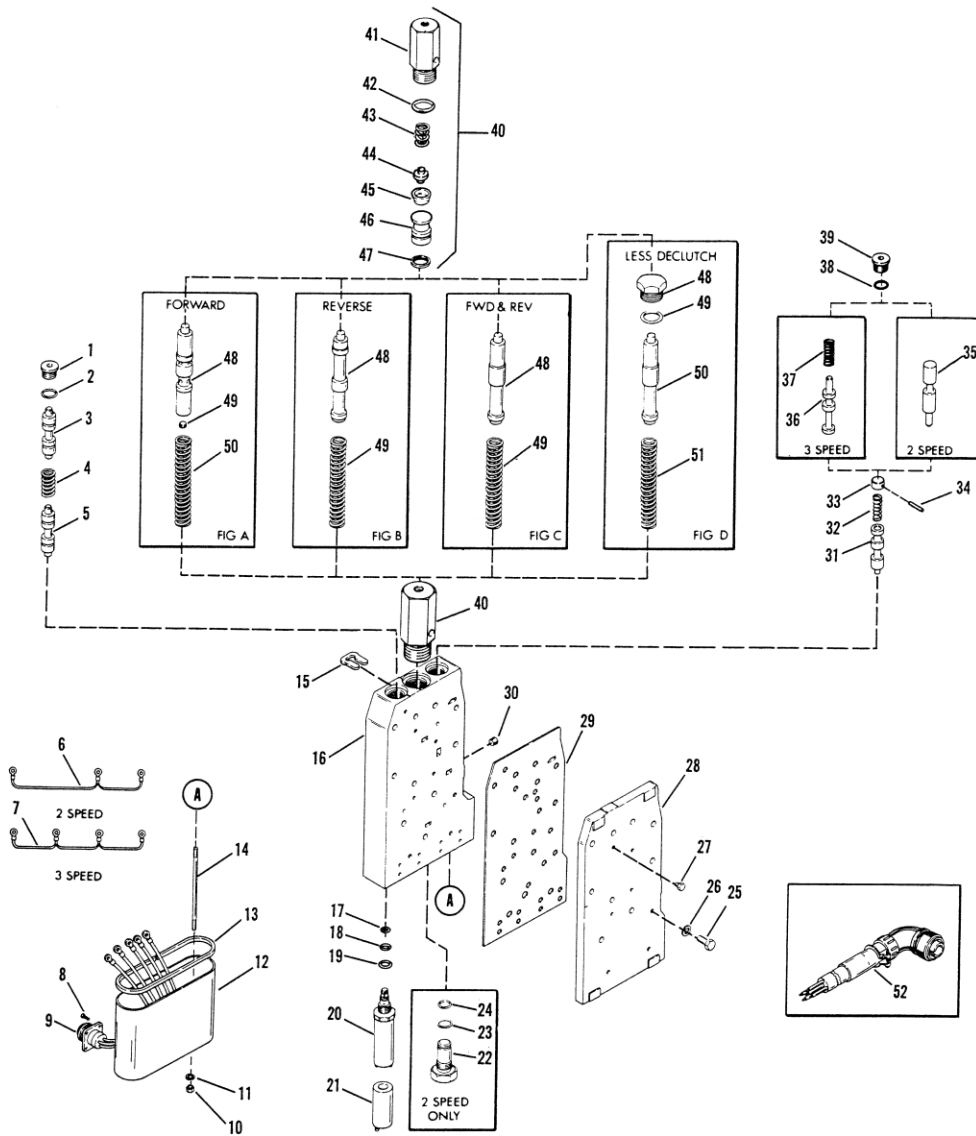
ROTATED VALVE

GRP-18-144 (REV. 2-91)





18000 ELECTRIC CONTROL VALVE ASSEMBLY



HYDRAULIC DECLUTCH

