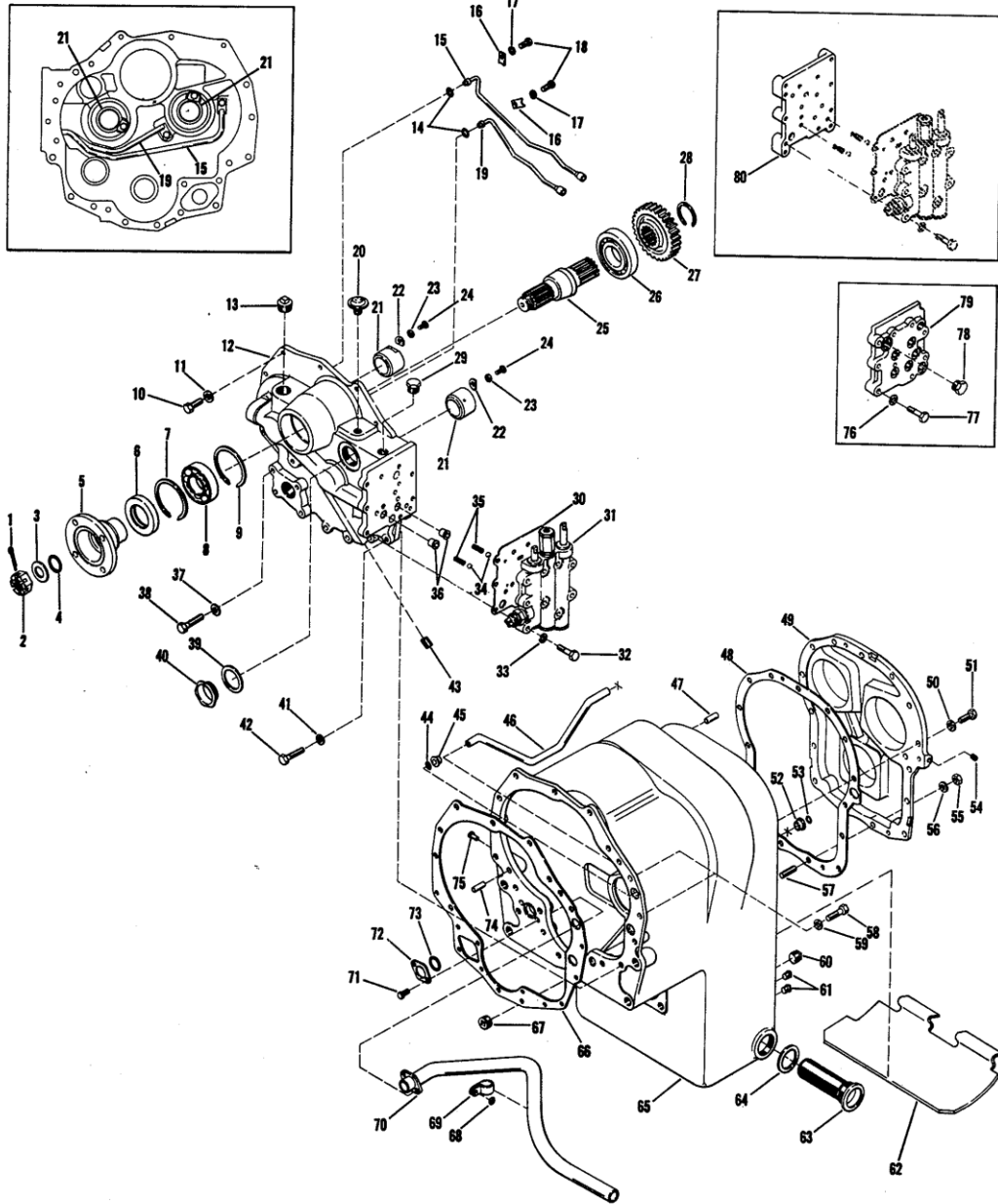


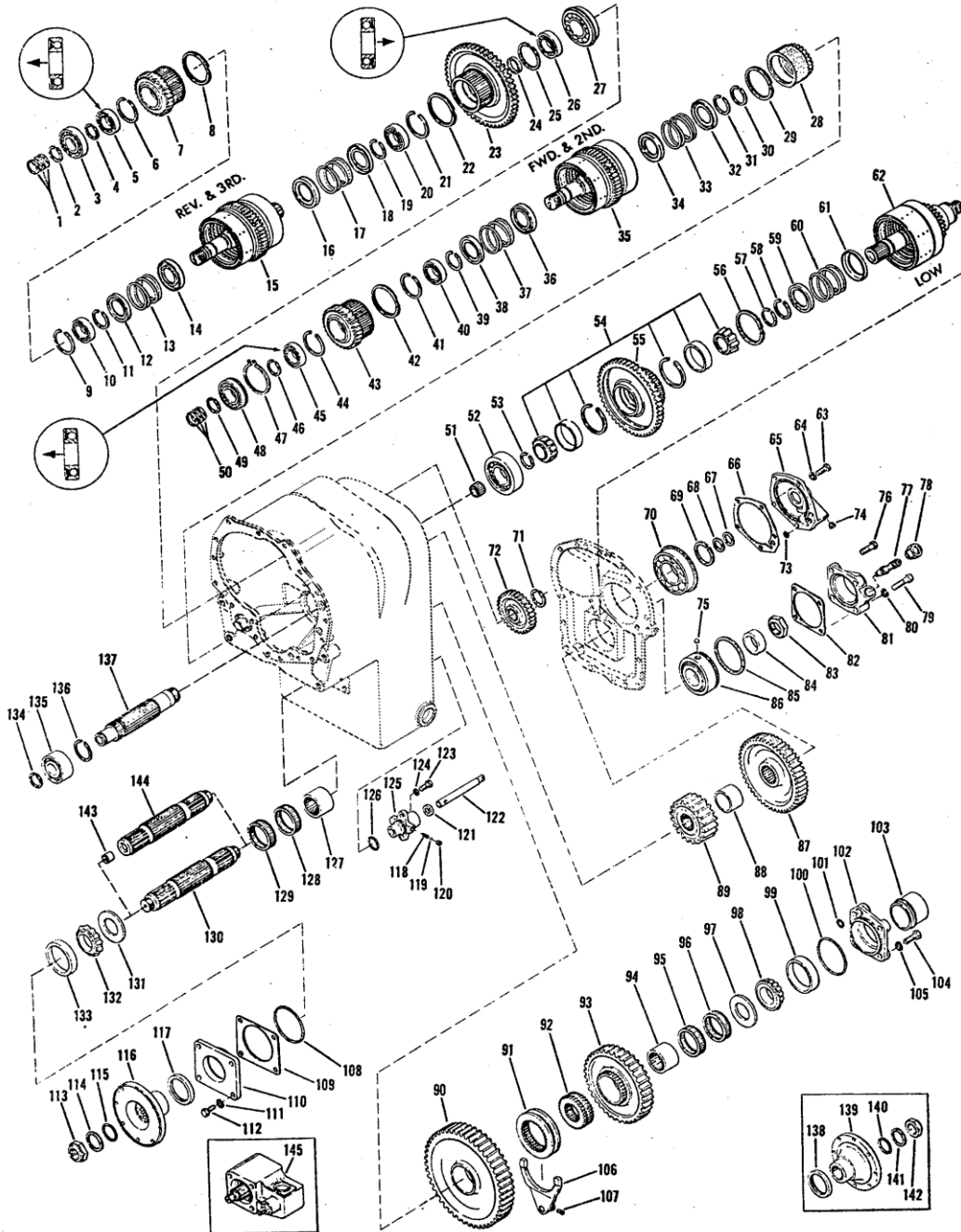
CLARK

CLARK





AUTOMOTIVE DIVISION

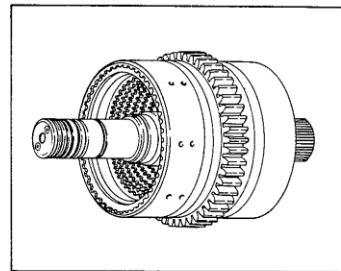
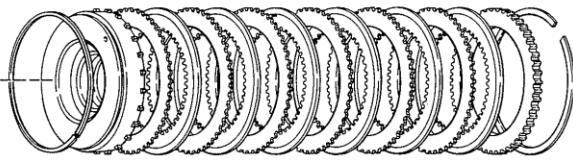
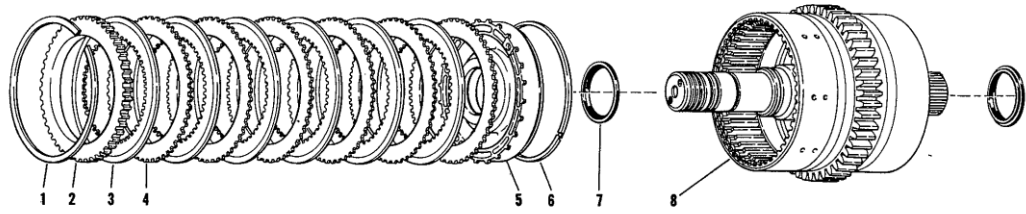


6 speed w/special Ratio

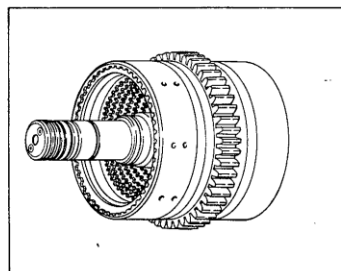
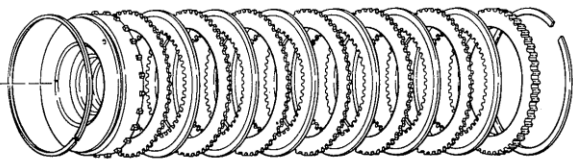
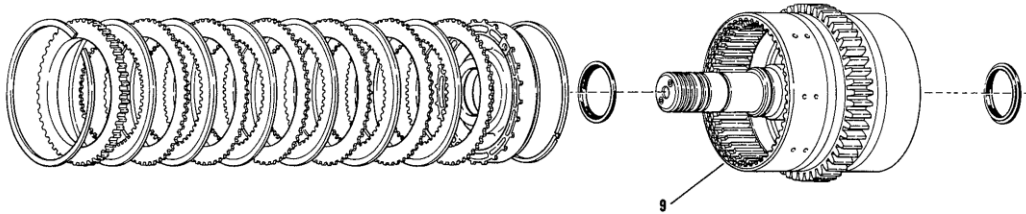
SEV 312 (Rev. 1-74)

**CLARK**

**CLARK**



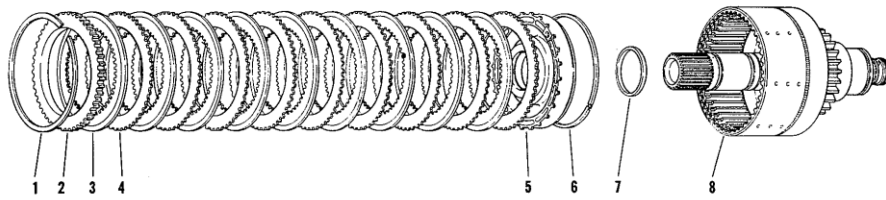
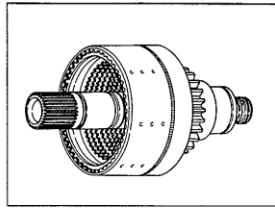
**REVERSE & 3RD CLUTCH GROUP (3 SPEED)**



**FORWARD & 2ND CLUTCH GROUP (3 SPEED)**

**CLARK**

**CLARK**

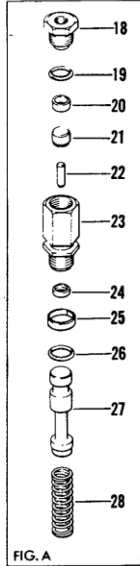


**LOW CLUTCH GROUP**

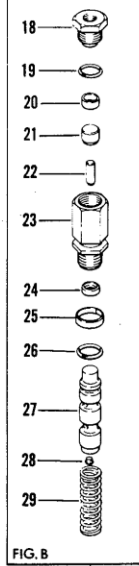
**CLARK**

**CLARK**

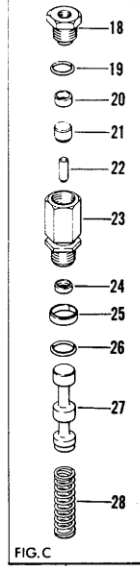
**DECLUTCH FORWARD & REVERSE**



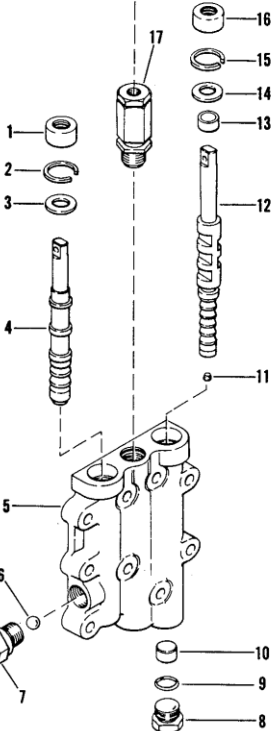
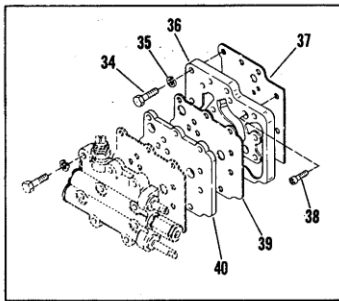
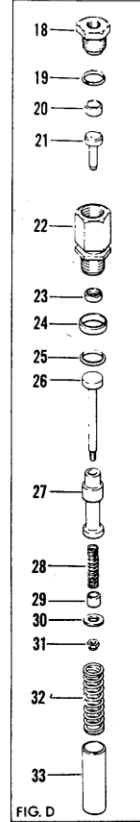
**DECLUTCH REVERSE ONLY**



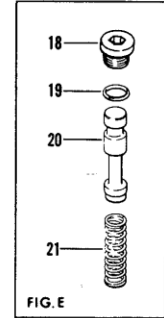
**DECLUTCH FORWARD ONLY**



**INCHING**



**LESS DECLUTCH**



**NOTE:**

Speed selector spacers (items 10 and 13) and the declutch valve (item 17) are not included when the control valve housing assembly (item 5) is ordered.

When ordering the control valve housing assembly (item 5) from the Service Parts List also order the spacer or spacers listed as items 10 and 13 and the declutch valve, spool and spring needed. **NOTE:** Some valves will require no spacers, some valves will require 1 spacer and some will require 2 spacers.

See information chart on reverse side.

Refer to Service Parts List for correct spacers and declutch valves to be ordered.

**CONTROL VALVE ASSEMBLY  
(HYDRAULIC DECLUTCH)**