

**CLARK**

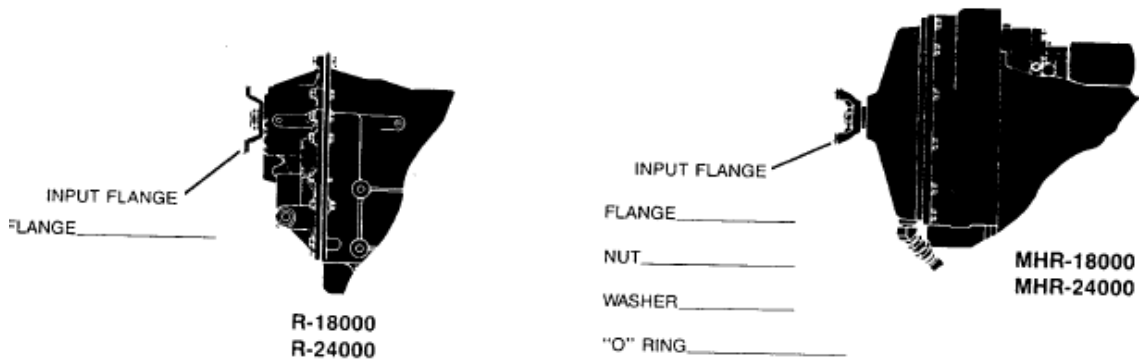
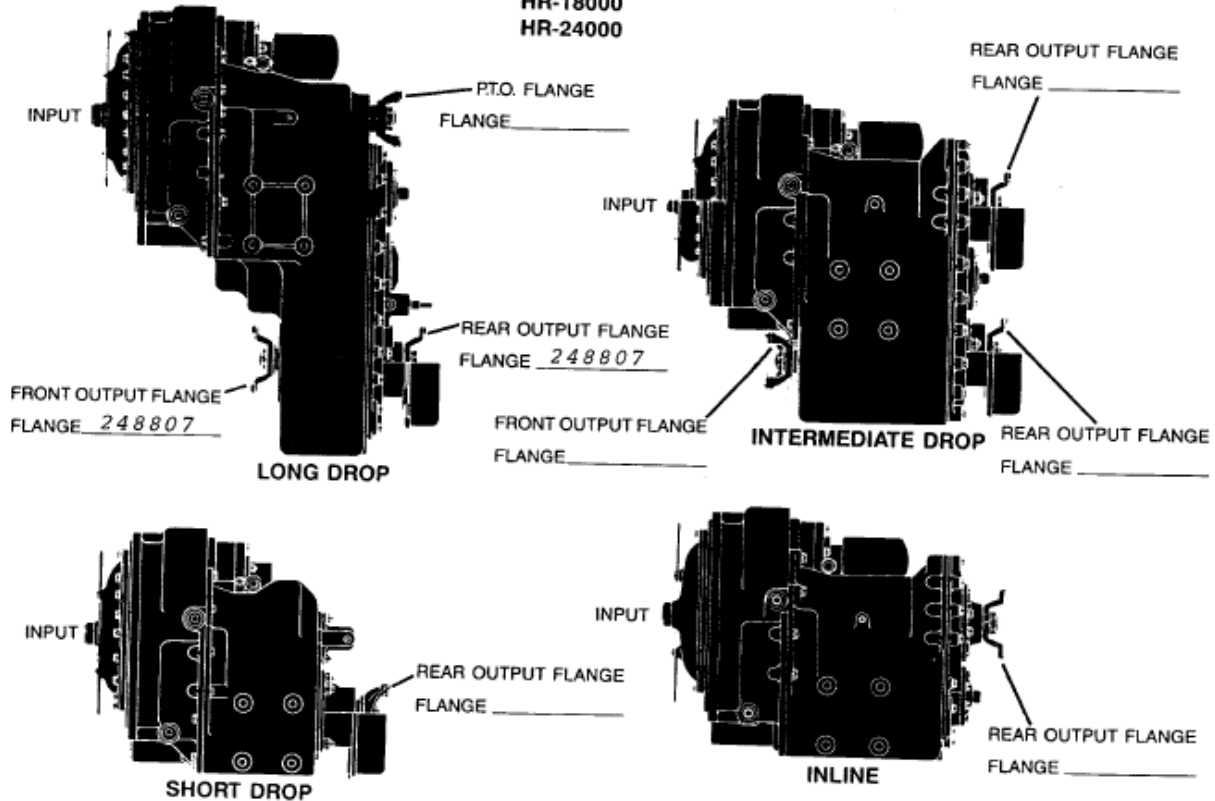
**CLARK**

# CLARK COMPONENTS INTERNATIONAL

A Business Unit of Clark Equipment Company

MODEL NO. 13, 9FHR24659-3  
PART NO. 290123  
DATE 21-6-94

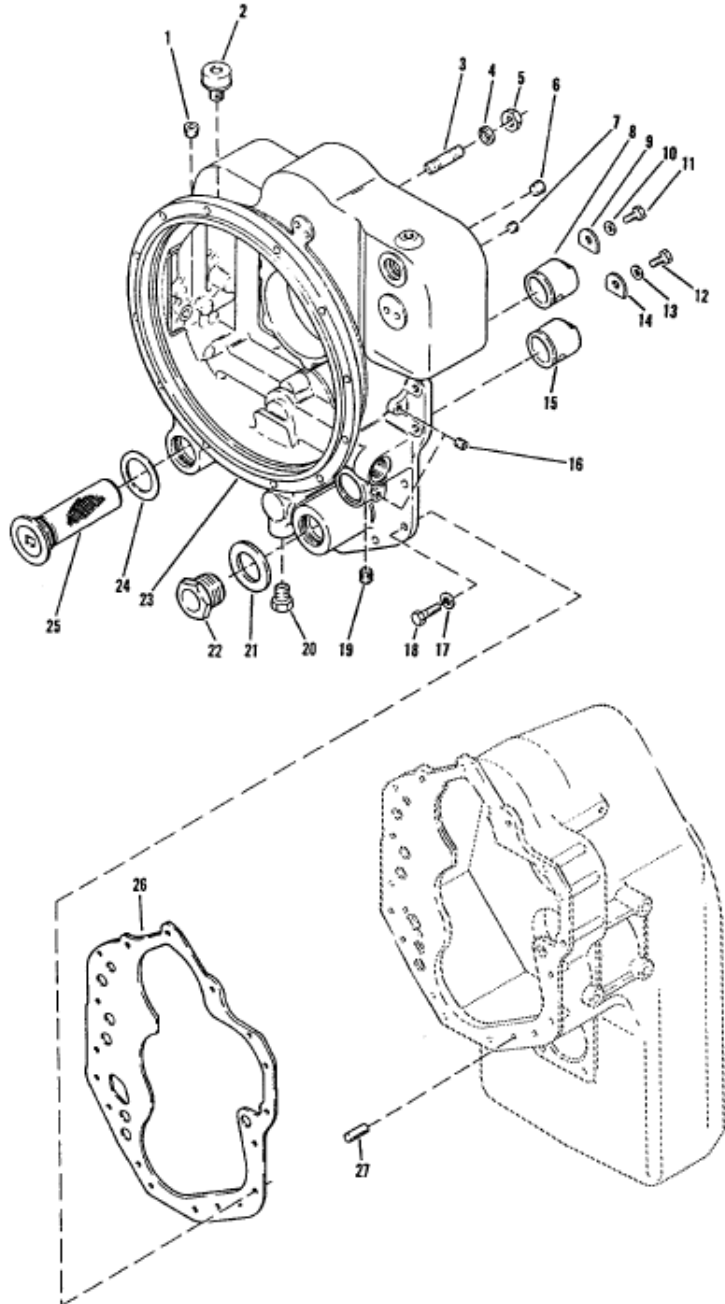
**HR-18000  
HR-24000**



**CLARK**

**CLARK**

**24000  
CONVERTER HOUSING GROUP**



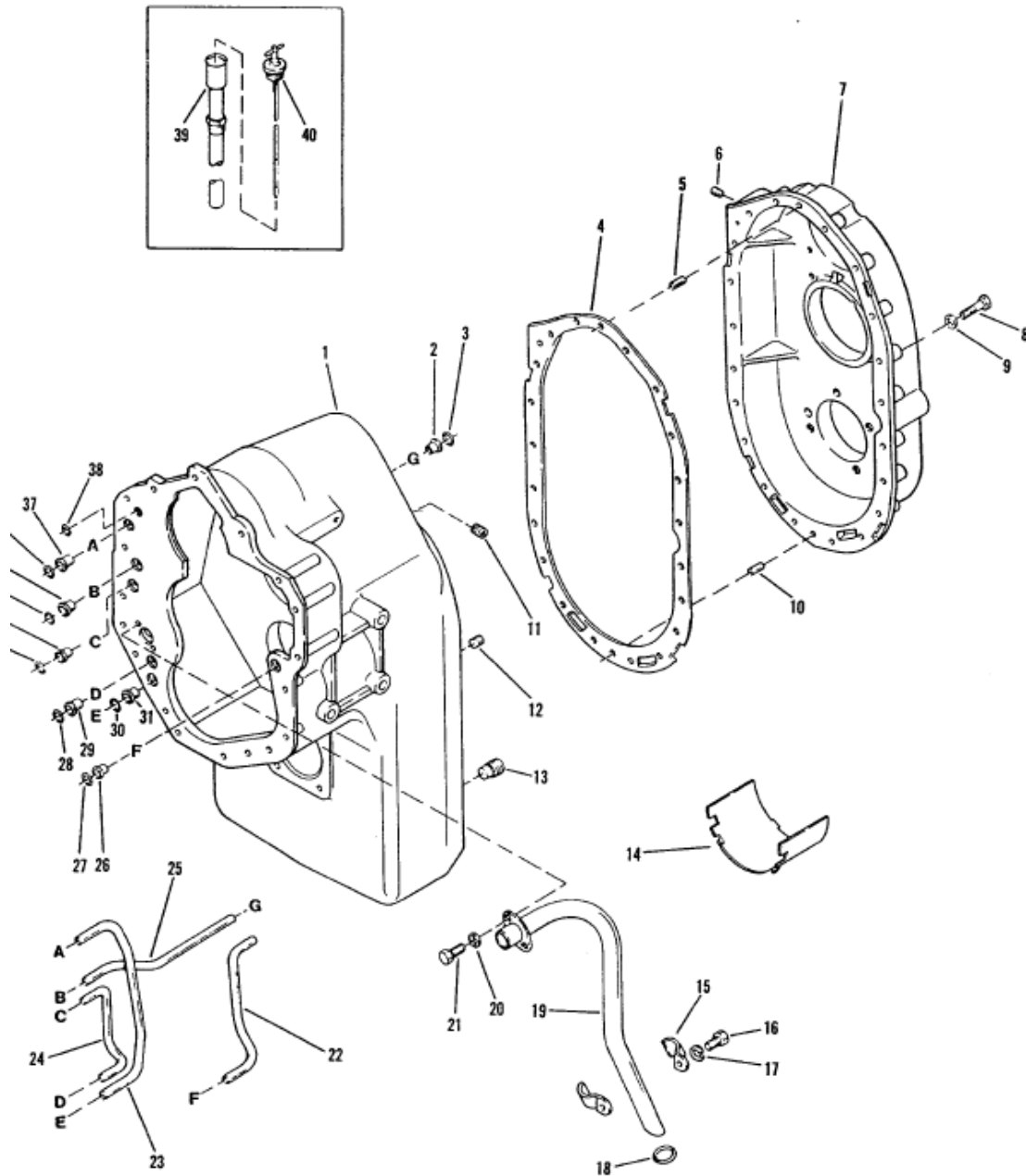
GRP-24-1 12-85

**CLARK**

**CLARK**

24000

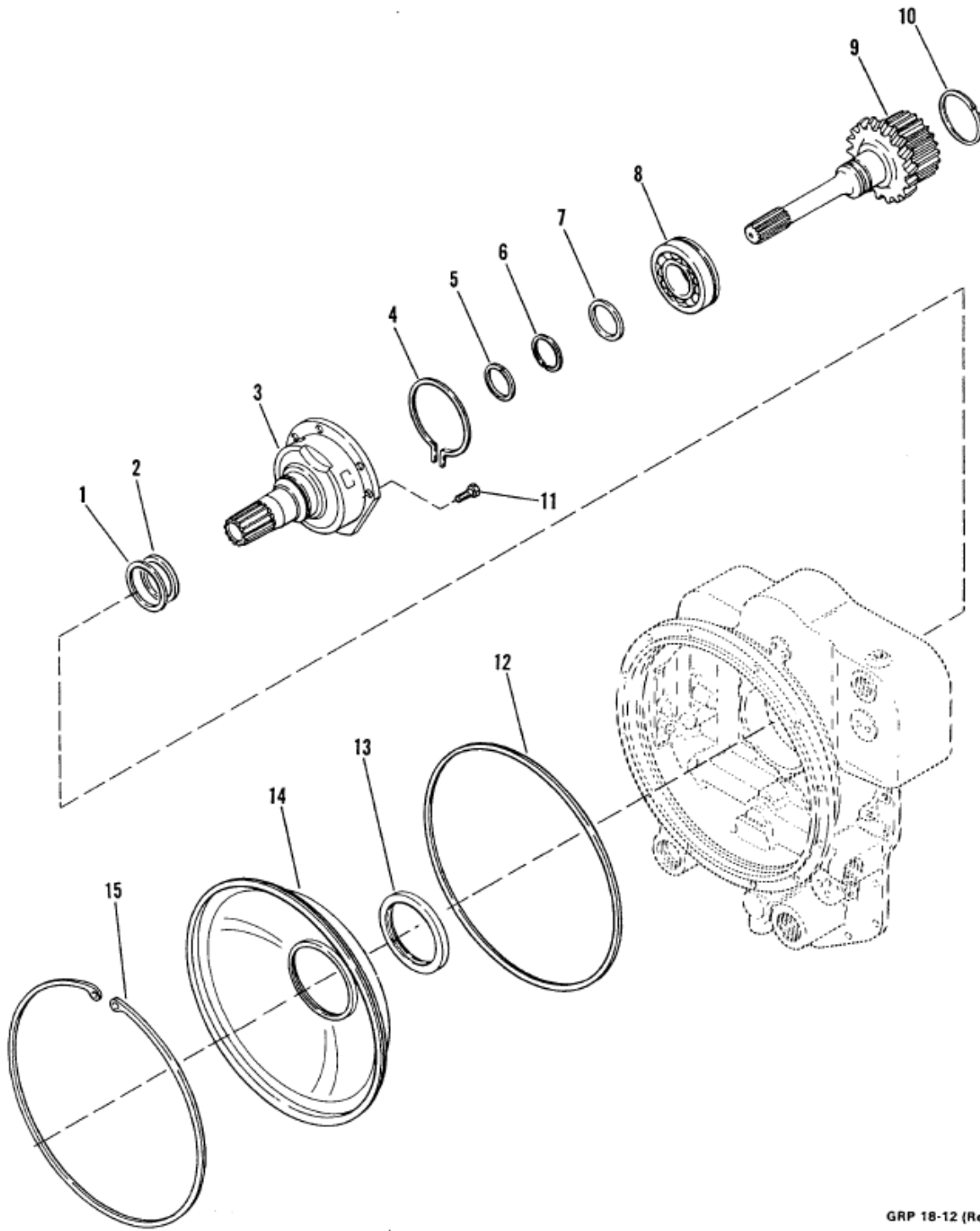
**TRANSMISSION CASE & REAR COVER GROUP**



**CLARK**

**CLARK**

**18000 TURBINE SHAFT, STATOR SUPPORT, &  
OIL BAFFLE GROUP - WITH AUXILIARY PUMP DRIVE**

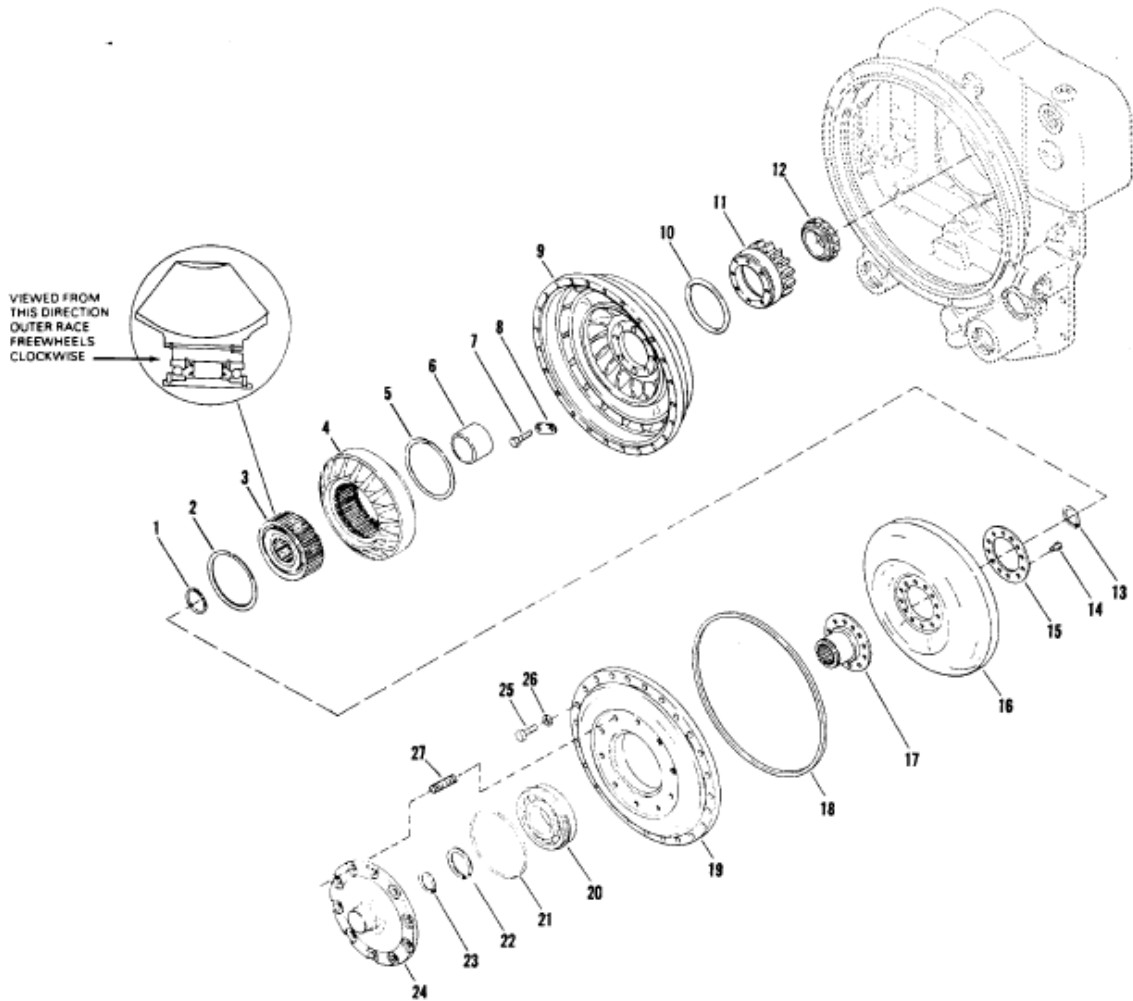


GRP 18-12 (Rev. 6-83)

**CLARK**

**CLARK**

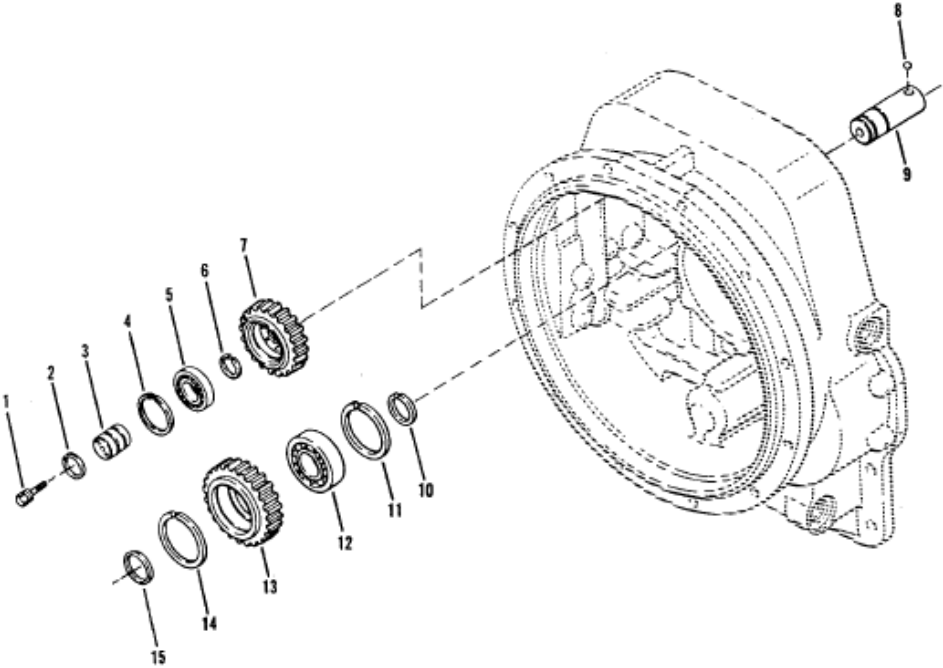
**24000  
TORQUE CONVERTER ASSEMBLY GROUP  
WITH FREEWHEEL**



**CLARK**

**CLARK**

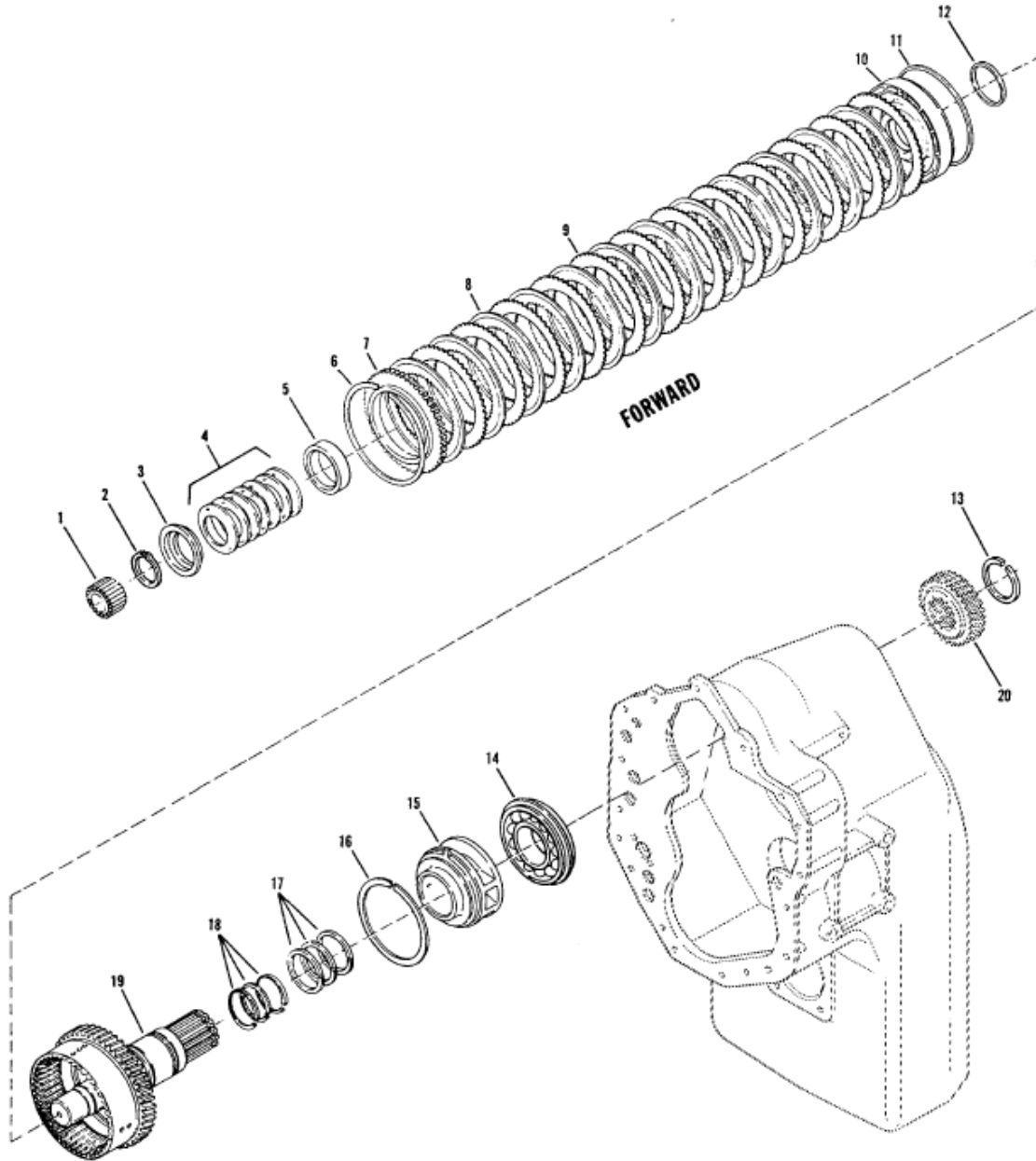
**18000 CHARGING PUMP DRIVE GROUP**



**CLARK**

**CLARK**

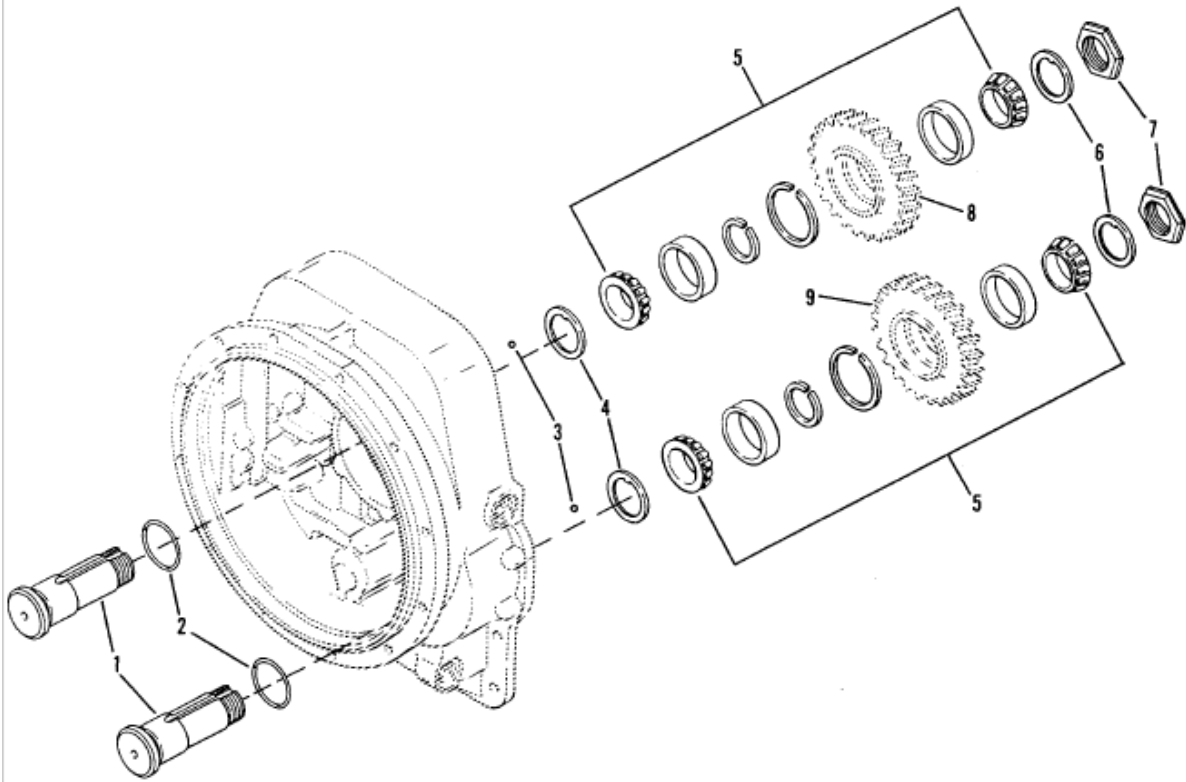
24000  
FORWARD SHAFT GROUP



**CLARK**

**18000 REVERSE IDLER GROUP**

**CLARK**

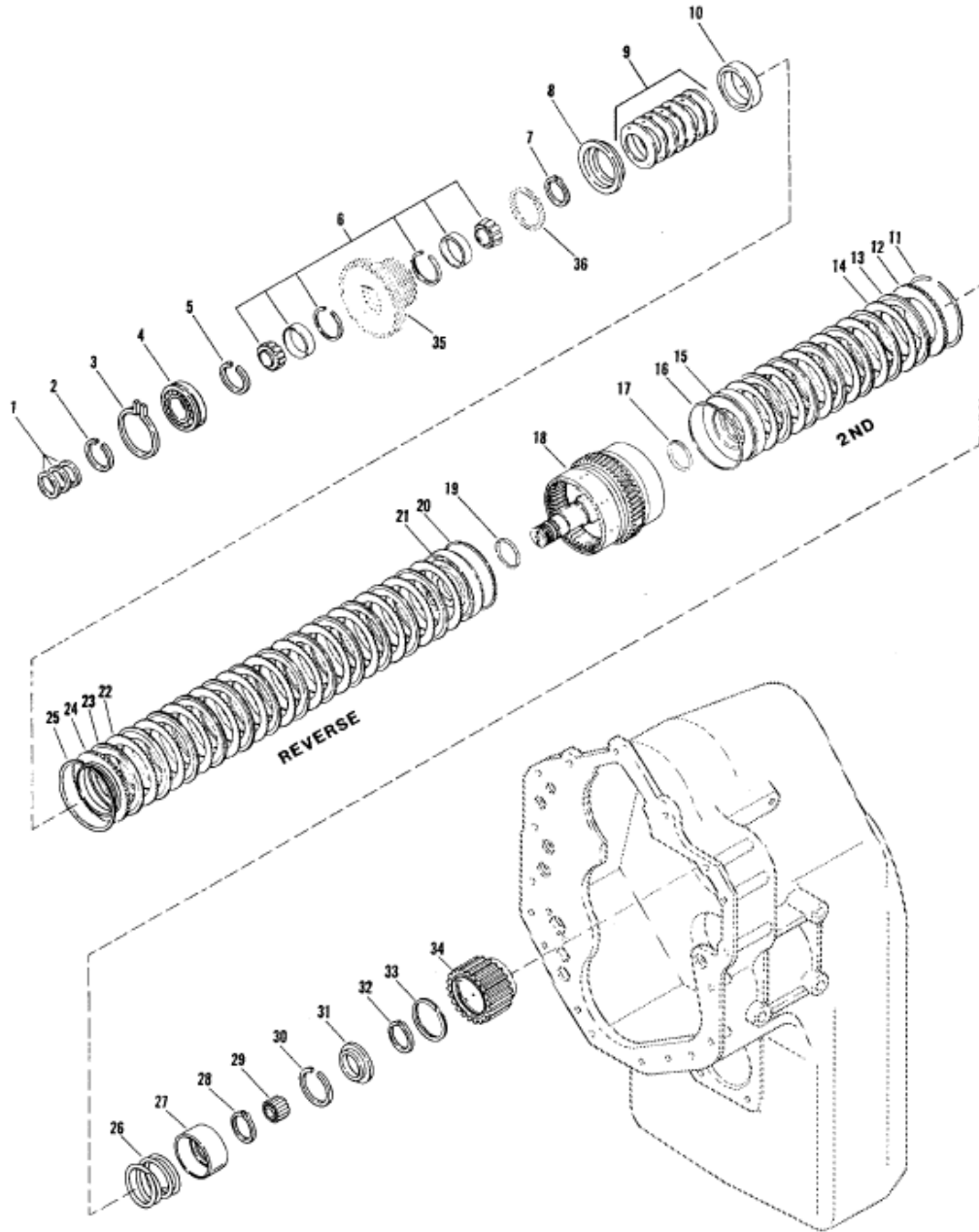




**CLARK**

**CLARK**

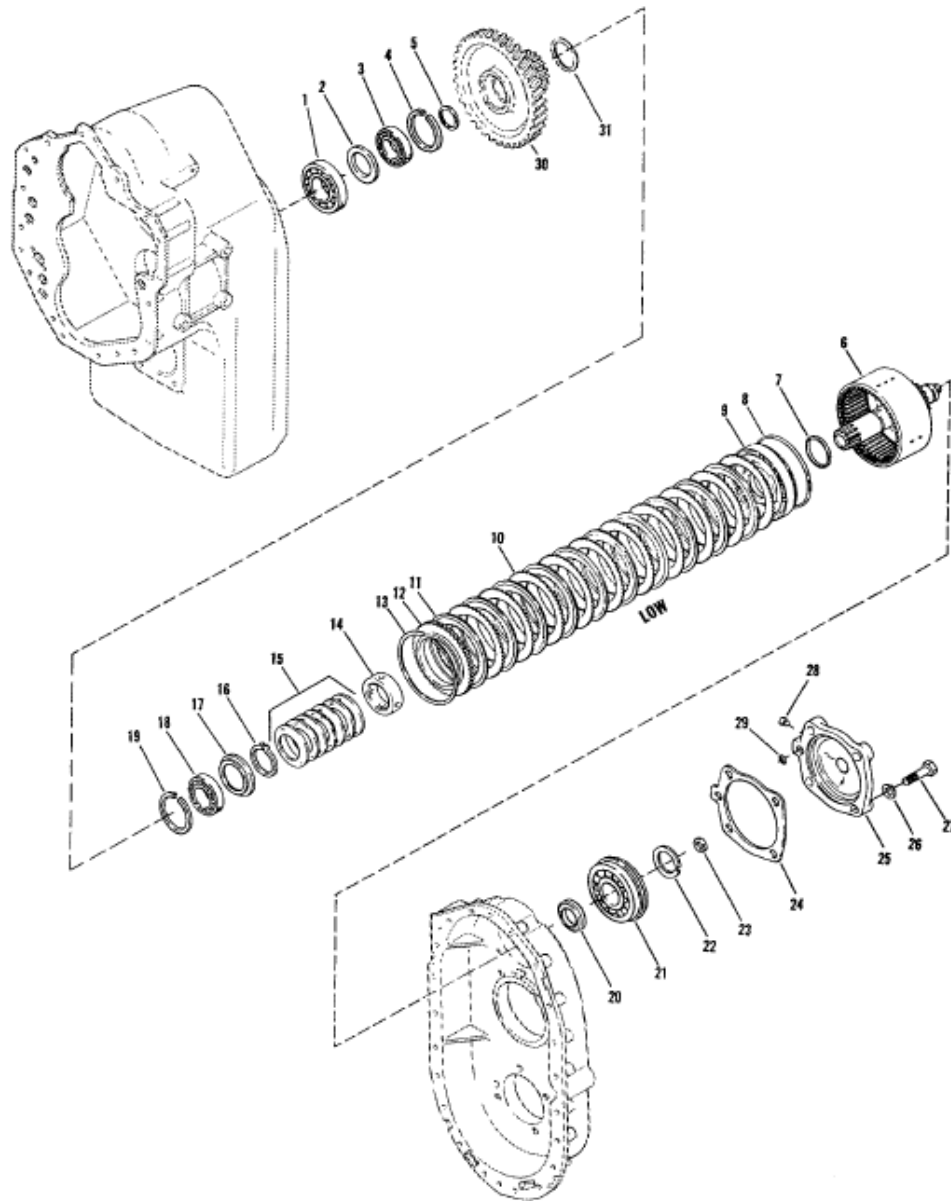
**24000  
REVERSE & 2ND SHAFT GROUP**



**CLARK**

**24000  
LOW SHAFT GROUP**

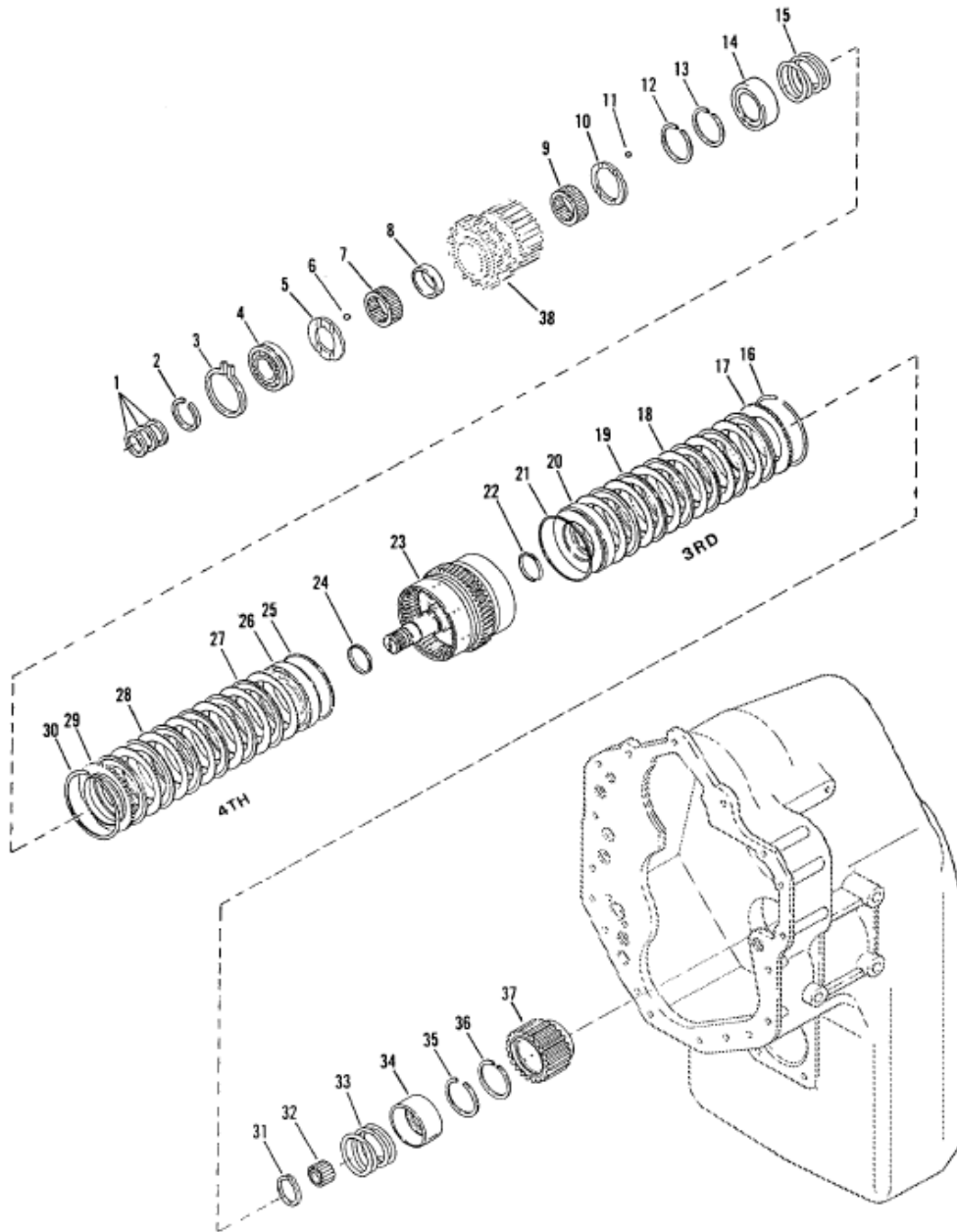
**CLARK**



**CLARK**

**CLARK**

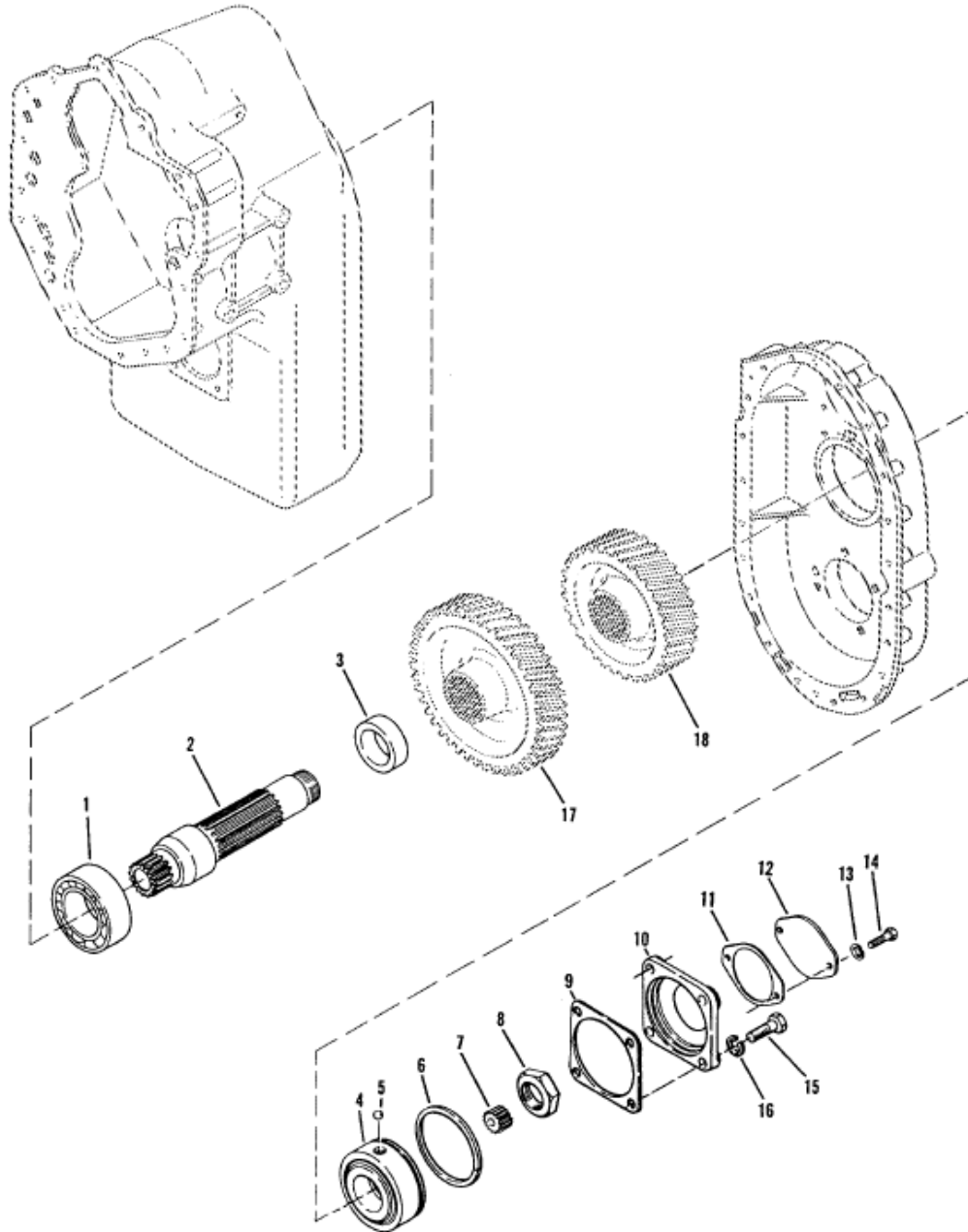
**24000**  
**3rd & 4th SHAFT CLUTCH GROUP**



**CLARK**

**CLARK**

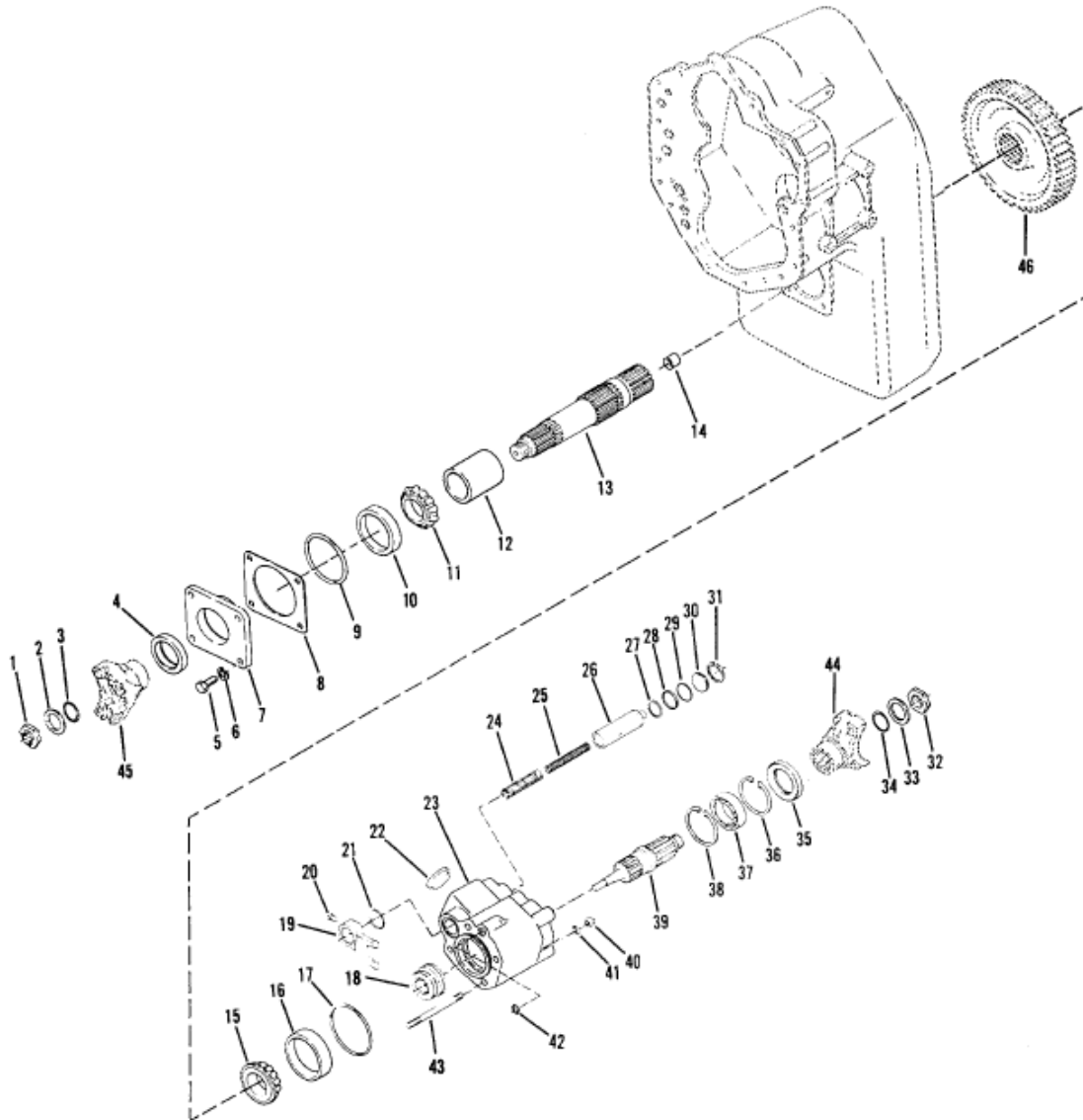
**24000  
IDLER SHAFT GROUP**



**CLARK**

**CLARK**

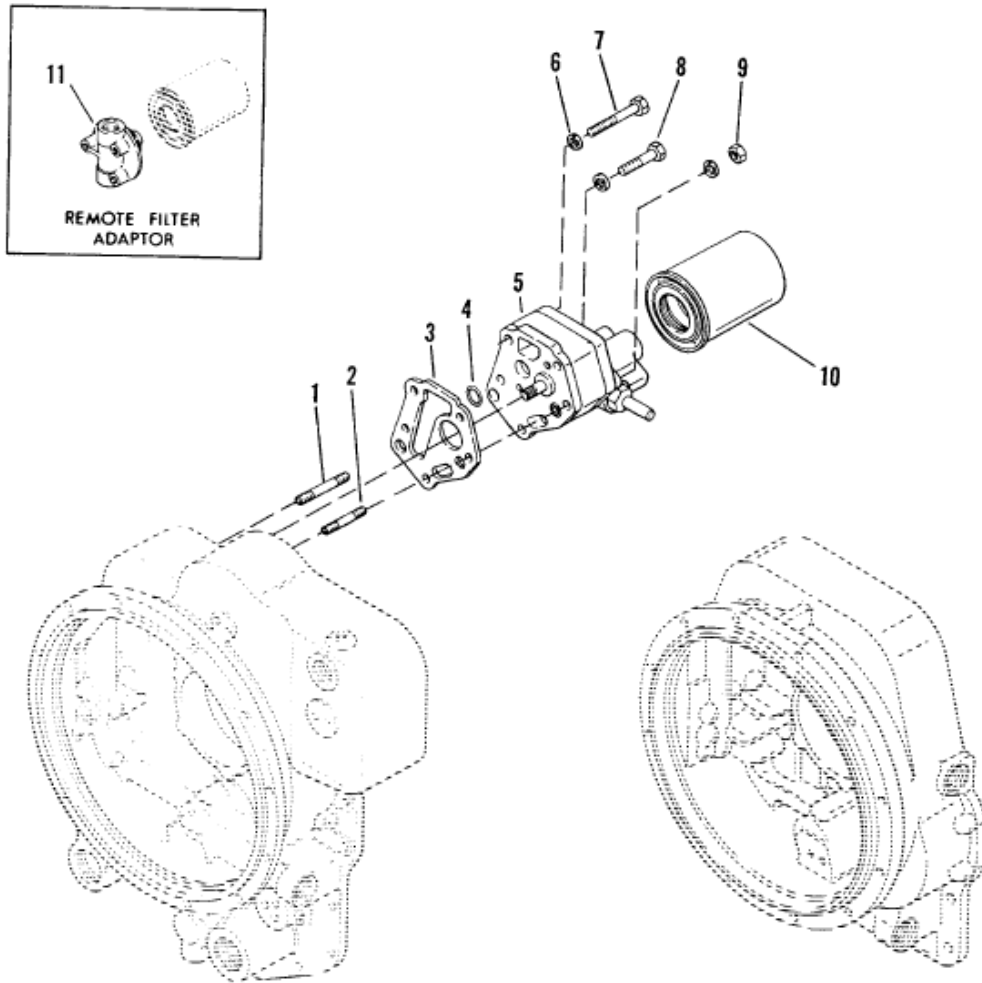
**24000**  
**OUTPUT SHAFT GROUP**  
**REAR DISCONNECT - HYD./AIR ACTUATED**



**CLARK**

**18000 CHARGING PUMP & FILTER ASSEMBLY GROUP**

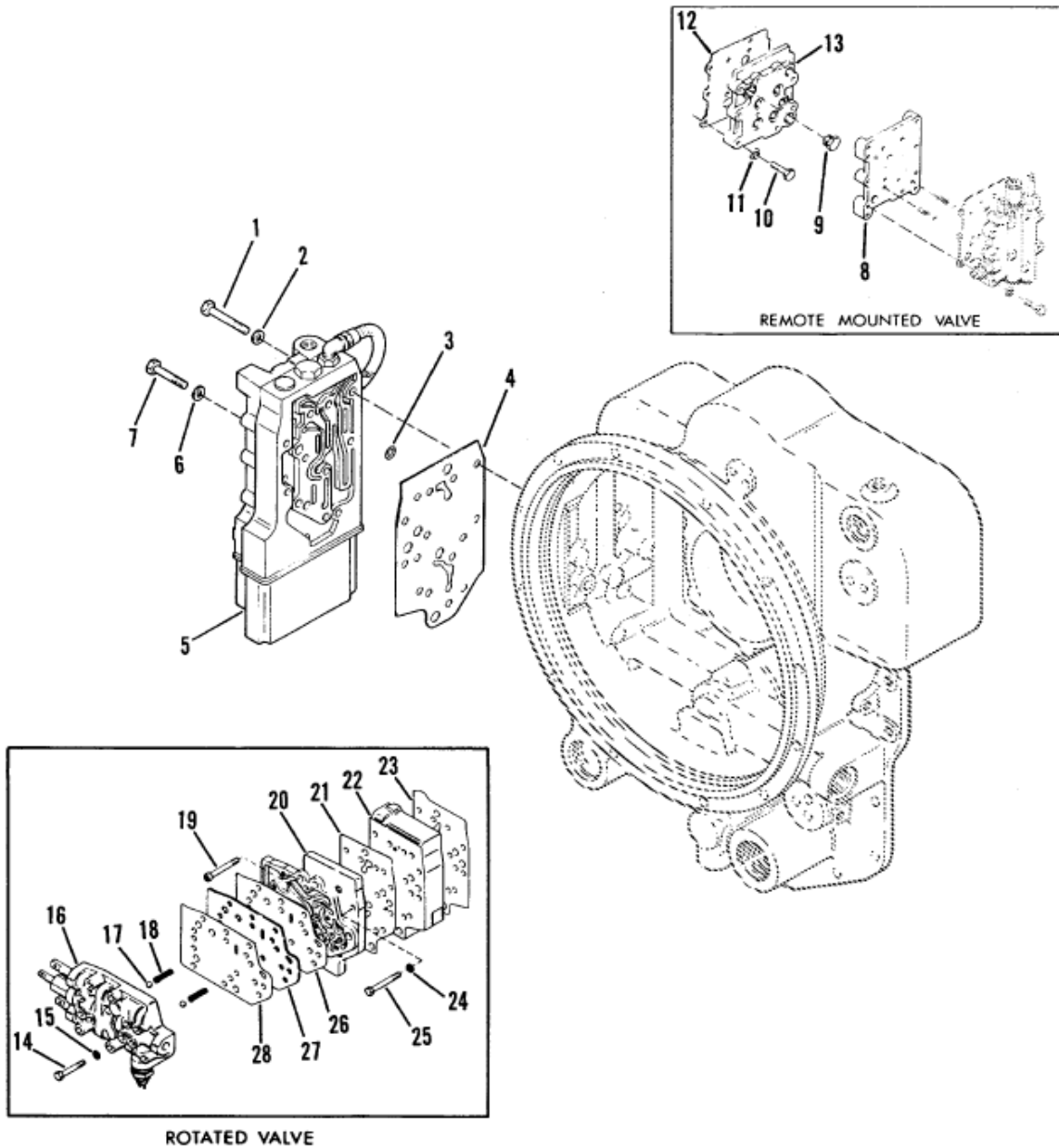
**CLARK**



**CLARK**

**CLARK**

**18000 - 6 SPEED ELECTRIC CONTROL VALVE MOUNTING GROUP**

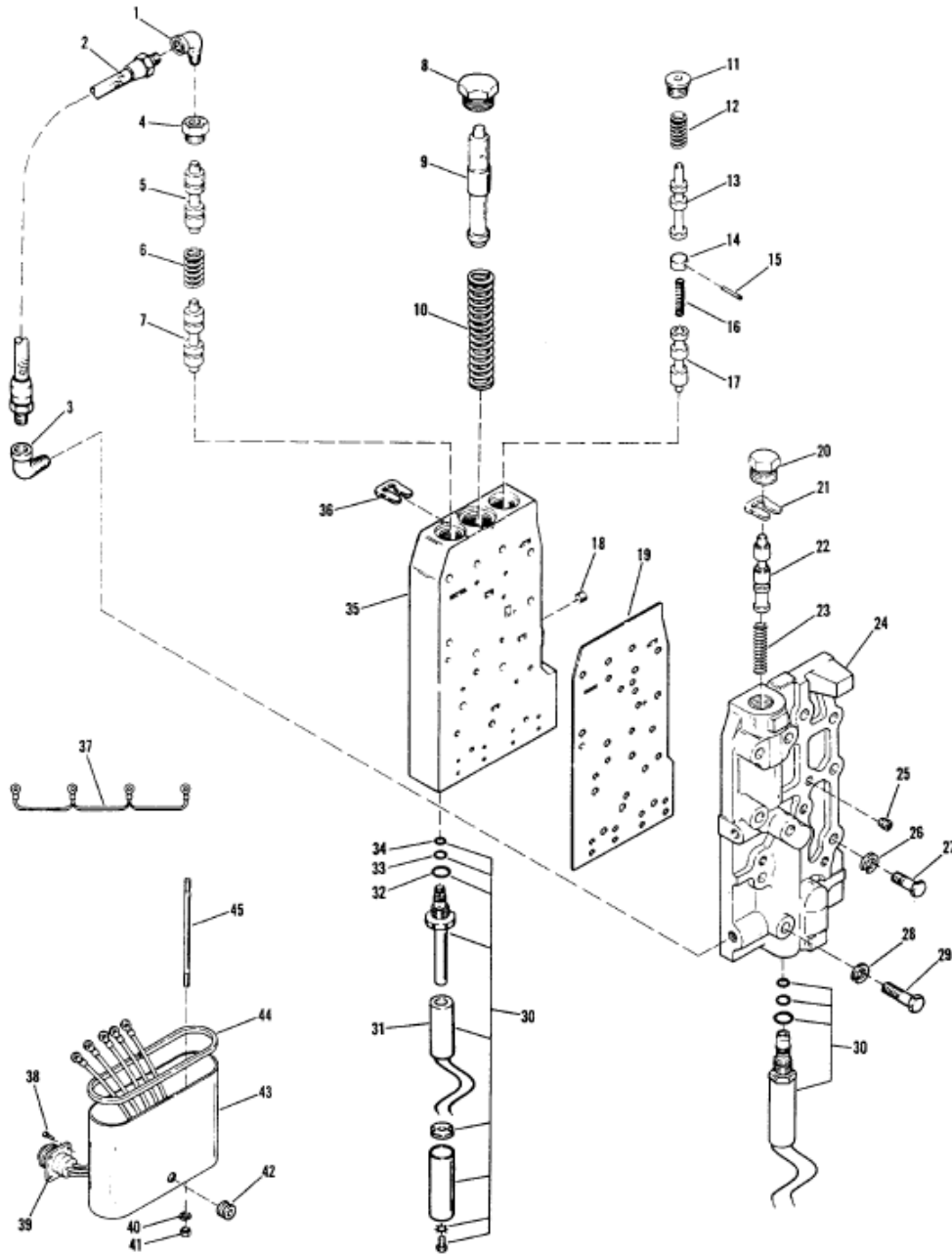


GRP-18-144 (REV. 2-91)

**CLARK**

**CLARK**

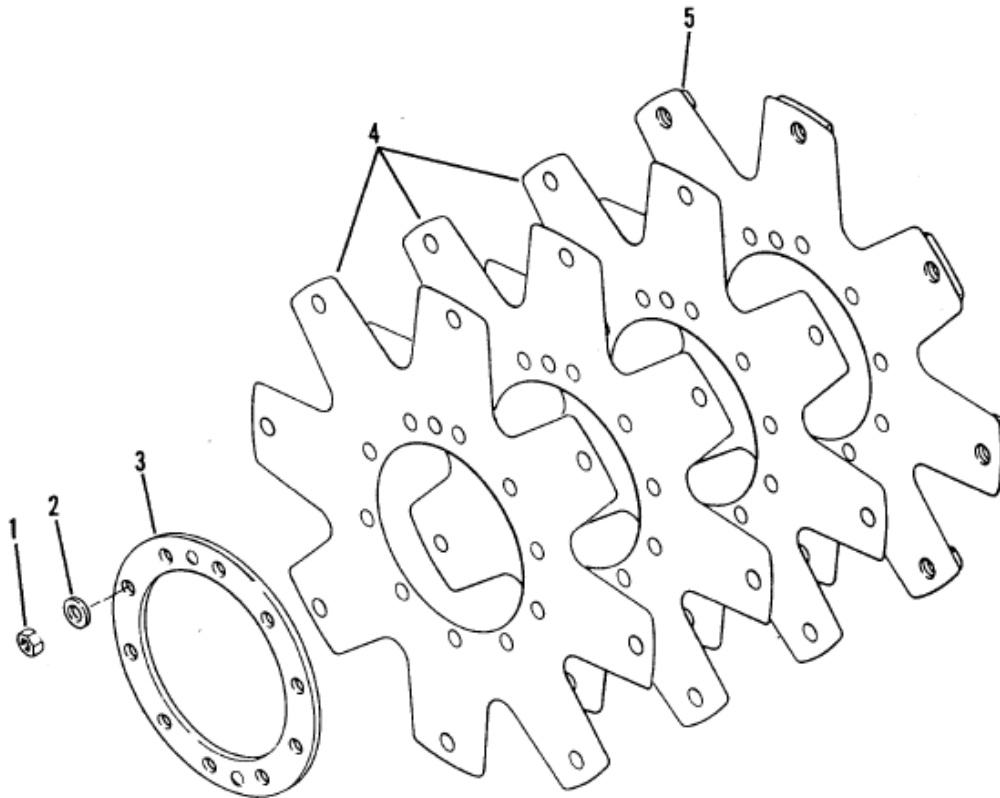
**18000 ELECTRIC CONTROL VALVE ASSEMBLY  
(6 SPEED FULL POWER SHIFT)  
(LESS DECLUTCH)**





**CLARK**

**CLARK**



**CLARK**

**CLARK**

**24000  
PUMP DISCONNECT ASSEMBLY**

